

# BELZONA REPAIRS BEARING SADDLE SUPPORT

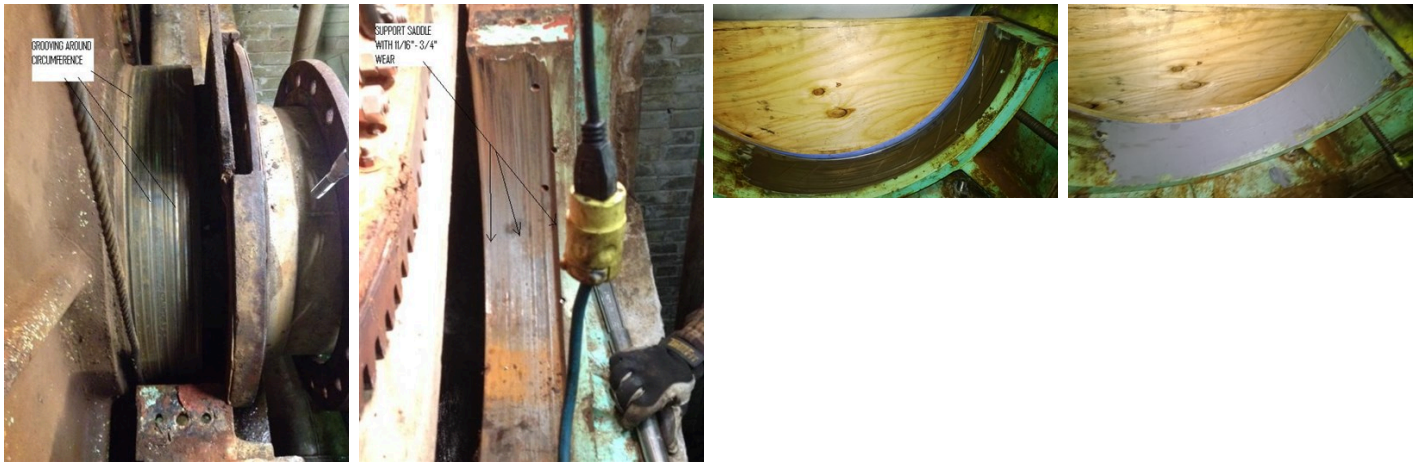
ID: 5209

Industry: General Industry  
Application: ENC-Engines and Casings  
Substrate: Steel  
Products: \* Belzona 1111 (Super Metal) ,

Customer Location: New England, USA  
Application Date: Fall 2013

## Problem

Severe metal loss from entrained solids in flowing water. During inspection, it was noted that a water screen bearing was grooved from abrasion. Upon removal for repair with Belzona 1111, it was further found that the support saddle was severely worn (3/4" +/-) under the bearing itself.



## Photograph Descriptions

- \* Grooved bearing surface ,
- \* Support saddle showing deep grooves ,
- \* Plywood & gasket former ,
- \* Completed application ,

## Application Situation

Bearing saddle support.

## Application Method

Hand tools, such as grinder, were used to prepare the surface. A plywood former was built to provide the profile depth. The application was carried out in accordance with a modified version of Belzona Know-How System Leaflet ENC-3b.

For more examples of Belzona Know - How In Action, please visit <https://khia.belzona.com>

ISO 9001:2015  
FS 695214  
ISO 14001:2015  
EMS 695213

Belzona products are  
manufactured under an ISO  
9000 Registered Quality  
Management System.

[www.belzona.com](http://www.belzona.com)

  
**BELZONA®**  
Repair • Protect • Improve

## Belzona Facts

The plant has used Belzona 1111 in the shop for a variety of repairs. The superintendent was only concerned if he had enough Belzona 1111 on hand to complete the application because of the scheduled downtime.

---

For more examples of Belzona Know - How In Action, please visit <https://khia.belzona.com>

ISO 9001:2015  
FS 695214  
ISO 14001:2015  
EMS 695213

Belzona products are  
manufactured under an ISO  
9000 Registered Quality  
Management System.

[www.belzona.com](http://www.belzona.com)

