

BELZONA SAVES WASTEWATER GRIT PUMP

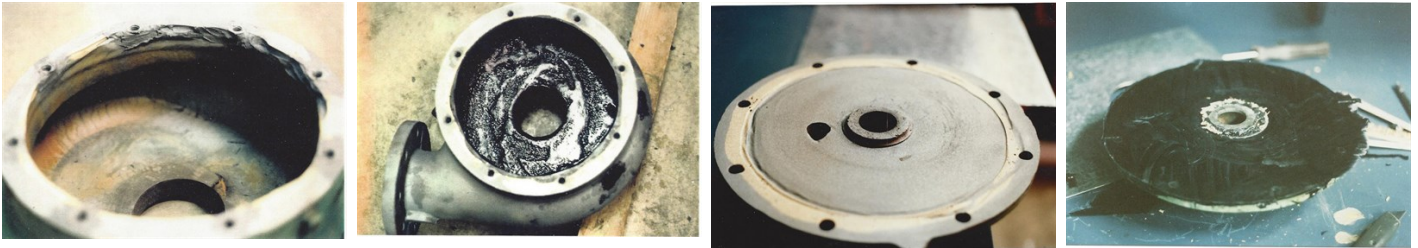
ID: 5266

Industry: Fluid Flow
Application: CEP-Centrifugal Pumps
Substrate: Cast Iron
Products: * Belzona 1311 (Ceramic R-Metal) ,
* Belzona 1811 (Ceramic Carbide) ,
* Belzona 2111 (D & A Hi-Build Elastomer) ,

Customer Location: Montana, USA
Application Date: 1986

Problem

This grit pump got extremely worn and had been rebuilt with an alternative method, which lasted only 3 months.



Photograph Descriptions

- * Pump bowl with threads rebuilt ,
- * Pump bowl coated with Belzona 1811 ,
- * End cover showing wear ,
- * End cover with Belzona 2111 formed in place; excess needs to be trimmed ,

Application Situation

Wastewater grit pump.

Application Method

The application was carried out in accordance with Belzona Know-How System Leaflets CEP-3 & CEP-5. The threads that were worn through were rebuilt with Belzona 1311. The bowl was lined with Belzona 1811. The end cover was rebuilt with Belzona 2111 as a comparison to Belzona 1811.

Belzona Facts

A replacement pump was very expensive. The previous rebuild had washed out in three months. After Belzona's solution, the pump was opened for inspection 6 months later and found to be in perfect condition.

For more examples of Belzona Know - How In Action, please visit <https://khia.belzona.com>

ISO 9001:2015
FS 695214
ISO 14001:2015
EMS 695213

Belzona products are
manufactured under an ISO
9000 Registered Quality
Management System.

www.belzona.com

BELZONA
Repair • Protect • Improve