

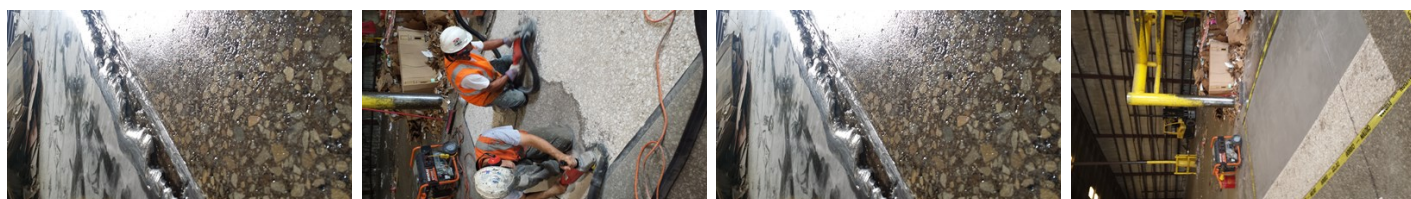
# BELZONA'S REPAIR ALLOWS FOR A QUICK RETURN TO OPERATION

ID: 5284

Industry: *Pulp & Paper* Customer Location: *Texas, USA*  
Application: *FPA-Floor Problem Areas* Application Date: *September 2014*  
Substrate: *Concrete and Steel*  
Products: *\* Belzona 4911 (Magma TX Conditioner) <br />Belzona 4131 (Magma-Screed) ,*

## Problem

*The concrete floor had begun to wear away due to abrasion from forklifts sliding bales into the conveyer. The steel was also excessively worn, causing a 2" lip for the bales to overcome.*



## Photograph Descriptions

- \* Wear at loading point ,
- \* Surface preparation with diamond grinding ,
- \* Completed application ,

## Application Situation

Baler loader at a busy recycling paper mill.

## Application Method

The application was carried out in accordance with a modified version of Belzona Know-How System Leaflet FPA-1. The surface was diamond ground to a 3-4 mil profile. Belzona 4911 was then applied to the area. Belzona 4131 was built up to the same steel level using a screed bar.

## Belzona Facts

The concrete would have needed to be cut out and poured, needing a week or more of labor and 28 days for full cure. The steel plate needed to be replaced, which would increase downtime. Belzona was able to complete the application in an 8 hour shutdown and have operations running 24/7 again.

For more examples of Belzona Know - How In Action, please visit <https://khia.belzona.com>

ISO 9001:2015  
FS 695214  
ISO 14001:2015  
EMS 695213

Belzona products are  
manufactured under an ISO  
9000 Registered Quality  
Management System.

[www.belzona.com](http://www.belzona.com)

**BELZONA**  
Repair • Protect • Improve