

BELZONA REBUILDS DAMAGED LOADING BAY

ID: 5467

Industry: Buildings & Structures

Customer Location: Valve Manufacturer, Haywards Heath, UK

Application: FPA-Floor Problem Areas

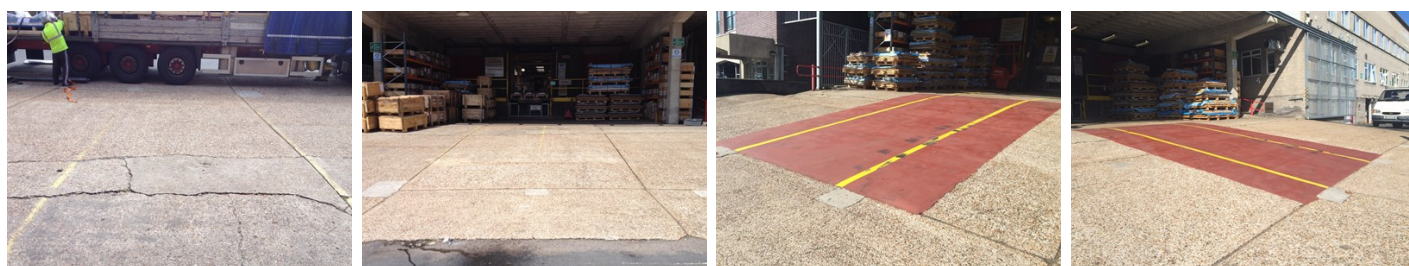
Application Date: September 2014

Substrate: Concrete

Products: * Belzona 4131 (Magma Screed) Belzona 4911 (Magma TX Conditioner),

Problem

The loading Bay to this factory has a gradient levelling off down at road level. When lorries load and unload they have to reverse from the road up the gradient and into the loading area. At the start of the gradient lorries wheels lose traction causing abrasion and damage to the concrete. To overcome this, lorries take the run-up to the loading Bay, resulting in damage to the loading bay wall and potential injury to personnel. Over time the damage to the concrete slab has worsened making loading and unloading much more hazardous.



Photograph Descriptions

* 1. Damaged concrete 2. Incline of loading bay. 3. Completed Application 4. Completed Application ,

Application Situation

Damaged loading bay

Application Method

The application was carried out in accordance with Belzona Know How System .1. After surface preparation to remove any loose concrete, Belzona 4911 was applied to the entire area followed by a layer of Belzona 4131.

Belzona Facts

The entire application was completed in one day, the quick cure time of Belzona 4131 meant the loading Bay could then be reopened the following day. Belzona 4131 provides excellent grip properties in both wet and dry conditions; it's excellent wear characteristics will ensure this is a long term solution.

For more examples of Belzona Know - How In Action, please visit <https://khia.belzona.com>

ISO 9001:2015

FS 695214

ISO 14001:2015

EMS 695213

Belzona products are
manufactured under an ISO
9000 Registered Quality
Management System.

www.belzona.com


BELZONA®
Repair • Protect • Improve