

Belzona Saves Significant Downtime for Cement Plant

ID: 550

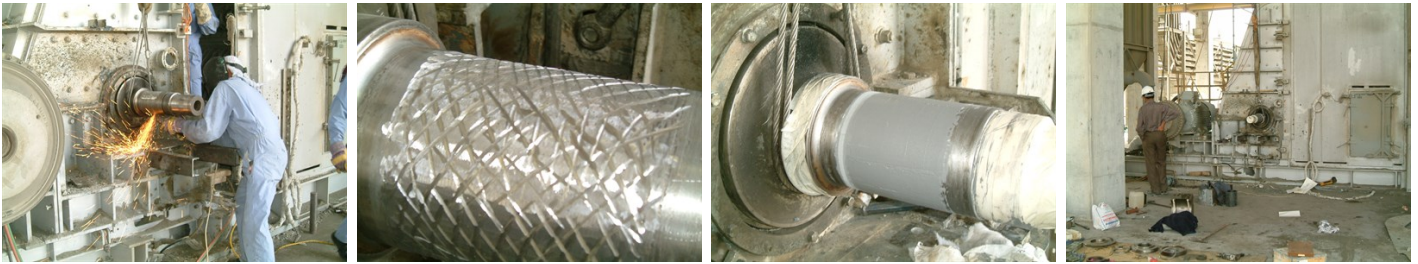
Industry: *Cement*
Application: *MPT-Mechanical Power Transmission*

Customer Location: *Cement plant - United Arab Emirates*
Application Date: *May 2005*

Substrate: *Steel*
Products: ** Belzona® 1121 (Super XL-Metal) ,*

Problem

Bearing area of the 155mm shaft was down due to bearing failure, causing the entire operation to shut down.



Photograph Descriptions

- * Surface preparation in progress ,
- * Prepared surface, ready for Belzona to be applied ,
- * Completed application ,
- * General view of crusher shaft in operation after the application ,

Application Situation

Crusher shaft

Application Method

Application was carried out in accordance with Belzona Know-How System Leaflet MPT-1 and MPT-2.

Belzona Facts

An alternative method would be to weld and grind the shaft, but this is not possible in situ. Removal of the shaft from the equipment would require over 100 hours of downtime as no spare part was available. With Belzona, this customer was back up and running in hours, not days, saving significant amounts of money from lost production and downtime.

For more examples of Belzona Know - How In Action, please visit <https://khia.belzona.com>

ISO 9001:2015
FS 695214
ISO 14001:2015
EMS 695213

Belzona products are
manufactured under an ISO
9000 Registered Quality
Management System.

www.belzona.com


BELZONA
Repair • Protect • Improve