

WALL REPAIR OF CYCLONE FEED SUMP WITH BELZONA

ID: 5533

Industry: Mining & Quarrying

Customer Location: Mine, Bolivia

Application: FPA-Floor Problem Areas

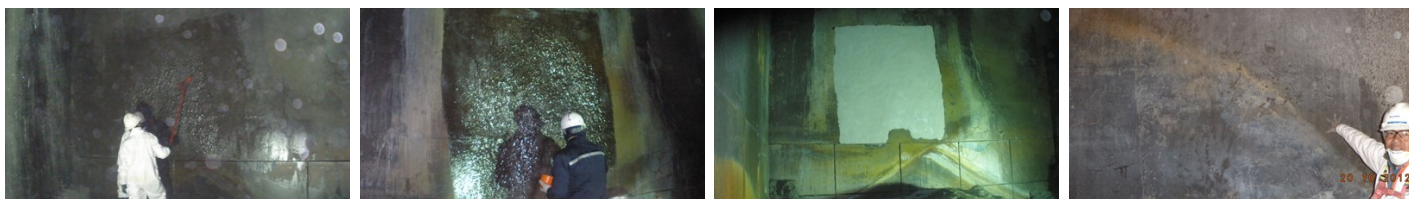
Application Date: June 9, 2011

Substrate: Concrete

Products: * Belzona 4111 (Magma-Quartz),
* Belzona 4911 (Magma TX Conditioner),

Problem

Damage on the wall of the cyclone feed sump, due to impact from the fall of ore and balls from mills.



Photograph Descriptions

- * Preparation of substrate ,
- * Application of Belzona 4911 ,
- * Wall repaired with Belzona 4111 ,
- * Inspection on October 20, 2012 ,

Application Situation

The mine produces 1,400 tons/day of concentrated zinc-silver and 300 tons/day of concentrated lead-silver and required the preparation of the wall of the cyclone feed sump during the 70 hour plant shutdown.

Application Method

The application was carried out in accordance with Belzona Know-How System Leaflet FPA-1. The surface was prepared with a pressure washer and salt removal products. All loose material was removed and later dried with compressed air.

Belzona Facts

Belzona 4111 provides high adhesion to the old concrete, exceptional resistance to impact, vibration, abrasion and chemical attack. To date the repair has not suffered wear or loss of thickness.

For more examples of Belzona Know - How In Action, please visit <https://khia.belzona.com>

ISO 9001:2015
FS 695214
ISO 14001:2015
EMS 695213

Belzona products are
manufactured under an ISO
9000 Registered Quality
Management System.

www.belzona.com


BELZONA[®]
Repair • Protect • Improve