

# INDUSTRIAL WASTEWATER IMPELLERS REPAIR

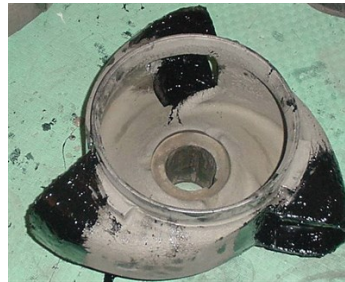
ID: 601

Industry: Water / Wastewater  
Application: CEP-Centrifugal Pumps  
Substrate: Cast iron  
Products: \* Belzona® 2111 (D&A Hi-Build Elastomer) ,  
\* Belzona® 2121 (D&A Hi-Coat Elastomer) ,

Customer Location: Industrial wastewater plant, Egypt  
Application Date: April 2003

## Problem

The edges of impellers were broken due to impact, abrasion and corrosion.



## Photograph Descriptions

- \* The broken edges of the impellers ,
- \* Steel sheets inserted to form the leading edges ,
- \* Edges were formed by Belzona® 2111 ,
- \* Final application, coated by Belzona® 2121 ,

## Application Situation

Wastewater impellers (three)

## Application Method

Application was carried out in accordance with Belzona Know-How System Leaflets CEP-1, CEP-3 and CEP-5.

## Belzona Facts

The impellers were re-formed and protected with an impact and abrasion-resistant Belzona Elastomer System.

For more examples of Belzona Know - How In Action, please visit <https://khia.belzona.com>

ISO 9001:2015  
FS 695214  
ISO 14001:2015  
EMS 695213

Belzona products are  
manufactured under an ISO  
9000 Registered Quality  
Management System.

[www.belzona.com](http://www.belzona.com)

  
**BELZONA**  
Repair • Protect • Improve