

# SEAWATER FIRE PUMP REPAIR WITH BELZONA

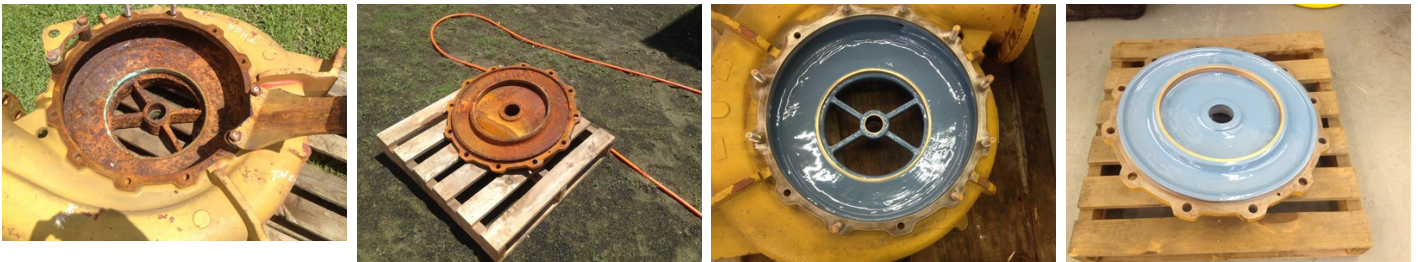
ID: 6033

Industry: CEP-Centrifugal Pumps  
Application: Carbon Steel  
Substrate: \* Belzona 1111 (Super Metal) ,  
\* Belzona 1341 (Supermetalgilde) ,

Customer Location: Houston, TX, USA  
Application Date: March 2012

## Problem

The customer was having problems with severe corrosion on the pumps due to them being idle for months at a time, often after only a few years of use they were being replaced with new ones.



## Photograph Descriptions

- \* Severely corroded pump ,
- \* Corroded pump end-cover ,
- \* Pump after the application ,
- \* Pump end-cover after the application ,

## Application Situation

Fire pump using sea water

## Application Method

The application was carried out in accordance with a modified version of Belzona Know-How System Leaflet CEP-3.

## Belzona Facts

For a fraction of the cost of a new pump the customer is now having his pumps repaired with Belzona products. This not only offers significant savings, but the coated pumps last in service 3 times longer than the originals.

For more examples of Belzona Know - How In Action, please visit <https://khia.belzona.com>

ISO 9001:2015  
FS 695214  
ISO 14001:2015  
EMS 695213

Belzona products are  
manufactured under an ISO  
9000 Registered Quality  
Management System.

[www.belzona.com](http://www.belzona.com)

**BELZONA**  
Repair • Protect • Improve