

BELZONA REPAIRS BEAM ABOVE PAPER MACHINE

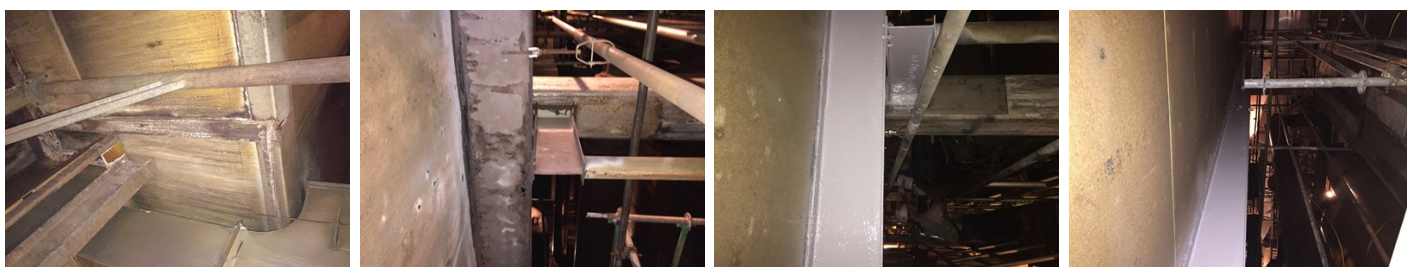
ID: 6046

Industry: *Buildings & Structures*
Application: *TCC-Tanks and Chemical Containment Areas*
Substrate: *Carbon Steel*
Products: ** Belzona 1111 (Super Metal) ,
* Belzona 5892 ,*

Customer Location: *Campti, LA, USA*
Application Date: *November 2015*

Problem

Badly corroded beam that was rusted completely through. The vibration of the paper machine was causing rust to fall on the paper sheet and break the paper causing the machine to shut down several times a day.



Photograph Descriptions

- * Corroded beam ,
- * Beam after SP-10 blast ,
- * Beam after rebuild and coating ,
- * Beam after coating ,

Application Situation

Support beam above paper machine.

Application Method

The application was carried out in accordance with a modified version of Belzona Know-How System Leaflet TCC-5.

Belzona Facts

The outage had already started when the mill found out what was causing the issues. The Belzona application cost \$16,000 USD and three days to be completed, compared to \$30,000 USD and two weeks to build the beam and cut the wall out to install, which would result in a more costly downtime.

For more examples of Belzona Know - How In Action, please visit <https://khia.belzona.com>

ISO 9001:2015
FS 695214
ISO 14001:2015
EMS 695213

Belzona products are
manufactured under an ISO
9000 Registered Quality
Management System.

www.belzona.com


BELZONA®
Repair • Protect • Improve