

# PINTLE PIN AND HOUSING REBUILT WITH BELZONA

ID: 6064

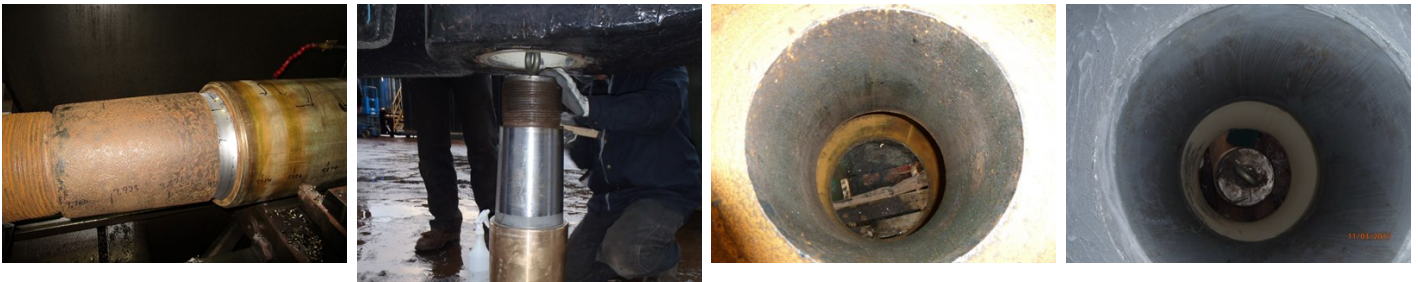
Industry: *Marine*  
Application: *SOS-Ships and Offshore Structures*

Customer Location: *Pacific Northwest, USA*  
Application Date: *October 2016*

Substrate: *Cast Steel*  
Products: *\* Belzona 1111 (Super Metal) ,*  
*\* Belzona 2111 (D & A Hi-Build Elastomer) ,*

## Problem

*Seawater had corroded the pintle pin and housing enough so that the pin was a loose fit in the housing.*



## Photograph Descriptions

- \* Pintle pin showing corrosion . ,
- \* Pintle pin rebuilt and ready to form new housing. ,
- \* Pintle housing showing corrosion before grit blasting. ,
- \* Pintle housing rebuilt, ready for final assembly with Belzona 2111 sealing both ends. ,

## Application Situation

Rudder pintle pin and housing on a large ship.

## Application Method

The worst of the corrosion on the pin was undercut on a lathe and rebuilt with Belzona 1111. Next, the pintle housing was grit blasted and coated with Belzona 1111. The pin was coated with a release agent and lifted into the housing to form a perfect fit. The rebuilt housing was inspected and then reassembled using Belzona 2111 to seal the top and bottom of the pintle housing.

## Belzona Facts

The only alternative would have been to try to weld and rebores the tapered housing, cost unknown. The Belzona solution provides protection against corrosion for the pintle pin and housing and avoids the usage of hot work.

For more examples of Belzona Know - How In Action, please visit <https://khia.belzona.com>

ISO 9001:2015  
FS 695214  
ISO 14001:2015  
EMS 695213

Belzona products are  
manufactured under an ISO  
9000 Registered Quality  
Management System.

[www.belzona.com](http://www.belzona.com)

  
**BELZONA**<sup>®</sup>  
Repair • Protect • Improve