

DAMAGED CONCRETE IN COLD ROOM REPAIRED WITH BELZONA

ID: 6201

Industry: Buildings & Structures

Customer Location: Food processing plant, Brisbane,
Queensland, Australia

Application: FPA-Floor Problem Areas

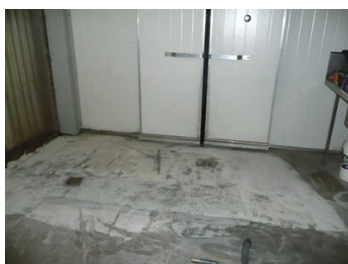
Application Date: January 2015

Substrate: Concrete

Products: * Belzona 4111 (Magma Quartz),

Problem

The concrete around the entrance to the cold room had degraded and was causing access issues for pallet trucks. Previous attempts using proprietary repair products had also failed



Photograph Descriptions

* 1. The damaged floor 2. Close up of the damaged floor 3. Repairs underway 4. Repairs completed ,

Application Situation

Cold room Floor

Application Method

Application was carried out in accordance with Belzona System Leaflet FPA-1. The damaged concrete was removed back to a sound substrate before being rebuilt using the Belzona 4111 system which was feathered out to match up with the existing floor to provide a smooth level surface allowing easy access to the cold store

Belzona Facts

Belzona 4111 was chosen for its high strength, performance, ability to be feather-edged and ease of application without the need for extensive structural works. Even when applied at cold temperatures there was no need for a long cure periods. This meant minimal disruption to the operation of the facility.

For more examples of Belzona Know - How In Action, please visit <https://khia.belzona.com>

ISO 9001:2015

FS 695214

ISO 14001:2015

EMS 695213

Belzona products are
manufactured under an ISO
9000 Registered Quality
Management System.

www.belzona.com


BELZONA®
Repair • Protect • Improve