

BELZONA RESURFACES WATER SUPPLY TROUGH AT OUTDOOR SWIMMING POOL

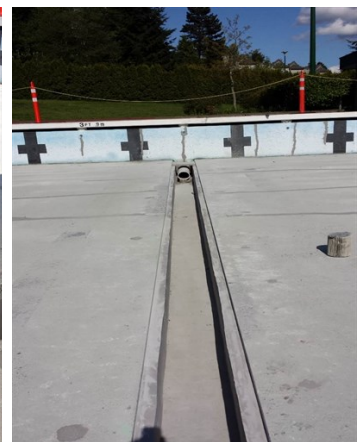
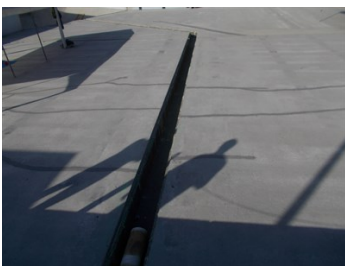
ID: 6287

Industry: *Buildings & Structures*
Application: *FPA-Floor Problem Areas*
Substrate: *Concrete*
Products: ** Belzona 4111 (Magma-Quartz) ,*

Customer Location: *Coquitlam, BC*
Application Date: *April 2015*

Problem

Over period of many years, the pool chemicals had attacked the concrete channel leaving the aggregate exposed. Ultimately loose aggregate would get into the pumps and damage them.



Photograph Descriptions

- * 1. View of water supply channel ,
- * 2. View of the eroded surface that needs to be resurfaced ,
- * 3. Resurfacing with Belzona 4111 in progress. ,
- * 4. Completed supply channel ,

Application Situation

The concrete surface.

Application Method

The application was carried out in accordance with Belzona Know-How System Leaflet FPA-1.

For more examples of Belzona Know - How In Action, please visit <https://khia.belzona.com>

ISO 9001:2015
FS 695214
ISO 14001:2015
EMS 695213

Belzona products are
manufactured under an ISO
9000 Registered Quality
Management System.

www.belzona.com


BELZONA®
Repair • Protect • Improve

Belzona Facts

Based on a similar previous application which had lasted beyond 5 years with no maintenance the green was given to refurbish a similar pool within the same municipality

For more examples of Belzona Know - How In Action, please visit <https://khia.belzona.com>

ISO 9001:2015
FS 695214
ISO 14001:2015
EMS 695213

Belzona products are
manufactured under an ISO
9000 Registered Quality
Management System.

www.belzona.com

