

Belzona Coats Submersible Pump for Potable Water

ID: 6328

Industry: Water / Wastewater

Customer Location: Filtration Plant, Montréal, Québec, Canada

Application: CEP-Centrifugal Pumps

Application Date: July 2016

Substrate: Cast Iron

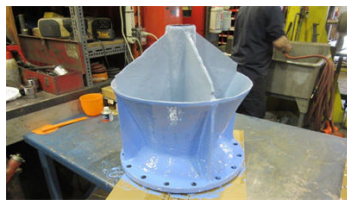
Products: Belzona 5812DW Belzona 1111 (Super Metal),

Problem

After several years in use this pump needed to be repaired and protected due to erosion/corrosion. Being a filtration plant a product with NSF 61 approval was specified by customer.



Corroded suction bell needed repair



Suction bell rebuilt with Belzona 1111 and overcoat with Belzona 5812DW



Other pump parts coated inside out with Belzona 5812DW

Application Situation

Submersible Pump

Application Method

Belzona surface preparation respected. 3 mils roughness profile. Aluminium oxide angular abrasive was used for blasting. Belzona system leaflets, CEP-3, 4, 6, was followed.

Belzona Facts

Originally customer thought pump was scrap. Pump shop convinced customer to repair and protect with Belzona. Belzona was picked because of our know-how, experience and credibility. After briefing customer on years in use of his pump welding and hot work were not considered. Belzona 5812DW's NSF 61 and blue color factored into the decision for the application.

For more examples of Belzona Know - How In Action, please visit <https://khia.belzona.com>

ISO 9001:2015

FS 695214

ISO 14001:2015

EMS 695213

Belzona products are

manufactured under an ISO

9000 Registered Quality

Management System.

www.belzona.com

Copyright © Belzona International Limited 2025


BELZONA
Repair • Protect • Improve