

BELZONA REPAIRS MORE THAN 300 SPALLED CONCRETE LOCATIONS

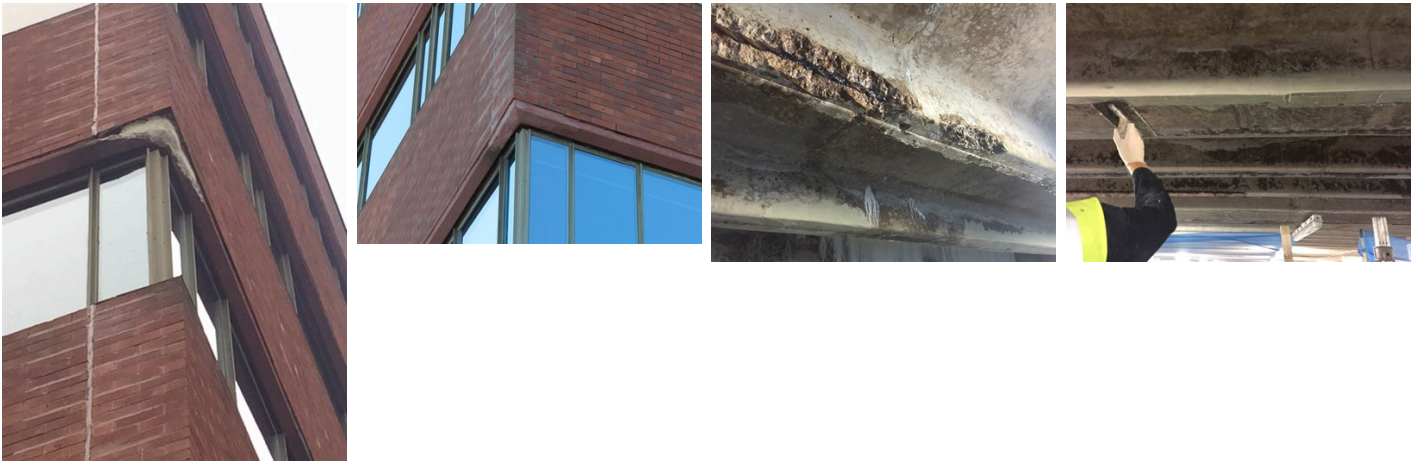
ID: 6347

Industry: Buildings & Structures
Application: WPA-Wall Problem Areas
Substrate: Red Brick and concrete
Products: * Belzona 4141 (Magma-Build) ,

Customer Location: Office building, Manchester, UK
Application Date: August 2015

Problem

Chunks of concrete were falling from various cracked and spalled areas of the building façade, causing concern for the public below.



Photograph Descriptions

* 1. Deteriorated overhead lintel 2. Lintel rebuilt with colour matched Belzona 4141 3. Spalled overhead concrete 4. Overhead concrete repairs in progress ,

Application Situation

Large office building with associated car park.

Application Method

The application was undertaken in accordance with Belzona System Leaflet WPA-4. In order to access exterior areas high up on the building, a Spider MEWP (Mobile Elevating Work Platform) was used. As the building's façade is made of red brick, a powder tint was added to the Belzona 4141, ensuring the system blended in with the surrounding substrate and provided an aesthetic finish. Temporary formers were used to support the Belzona material during application and to assist in reforming edge details.

Belzona Facts

The extensive repair work was completed in three months, (working weekends only), a small amount of time considering over 300 repair and protection applications were carried out.

For more examples of Belzona Know - How In Action, please visit <https://khia.belzona.com>

ISO 9001:2015
FS 695214
ISO 14001:2015
EMS 695213

Belzona products are
manufactured under an ISO
9000 Registered Quality
Management System.

www.belzona.com

BELZONA
Repair • Protect • Improve

For more examples of Belzona Know - How In Action, please visit <https://khia.belzona.com>

ISO 9001:2015
FS 695214
ISO 14001:2015
EMS 695213

Belzona products are
manufactured under an ISO
9000 Registered Quality
Management System.

www.belzona.com

