

MUFF COUPLING REPAIR WITH BELZONA

ID: 648

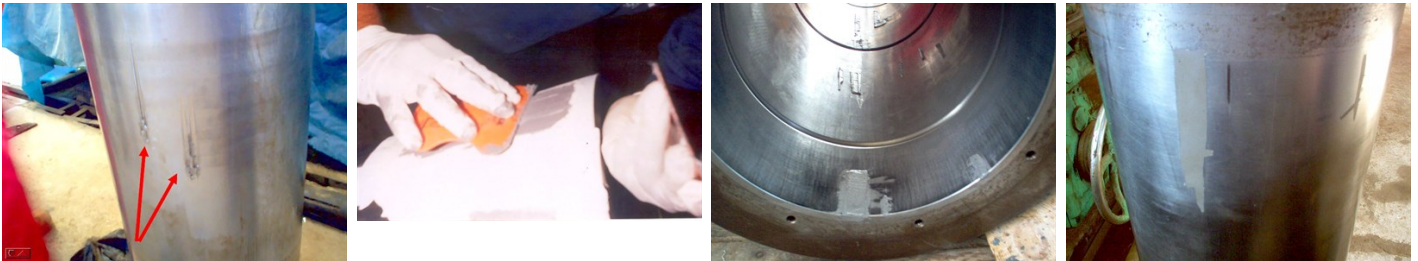
Industry: *Marine*
Application: *MPT-Mechanical Power Transmission*

Customer Location: *Maritime company, Egypt.*
Application Date: *September 2005.*

Substrate: *Steel.*
Products: ** Belzona® 1111 (Super Metal). ,*

Problem

Scratches on inner and outer surfaces of coupling.



Photograph Descriptions

- * Scratches on the inner part of the Muff Coupling ,
- * Filling the scratches with Belzona® 1111 ,
- * Belzona® 1111 applied to the coupling ,
- * Application completed ,

Application Situation

Muff coupling (The part that joins two parts of propeller shaft together)

Application Method

Application was carried out using a modification of Belzona Know-How System Leaflet MPT-13. The scratches were rebuilt then the surface was finished to size.

Belzona Facts

Belzona repaired all scratches without heat distortion and machining. It was installed using 1500 bar oil pressure which the Belzona was able to withstand.

For more examples of Belzona Know - How In Action, please visit <https://khia.belzona.com>

ISO 9001:2015
FS 695214
ISO 14001:2015
EMS 695213

Belzona products are
manufactured under an ISO
9000 Registered Quality
Management System.

www.belzona.com


BELZONA
Repair • Protect • Improve