

BELZONA PUMP RESTORATION

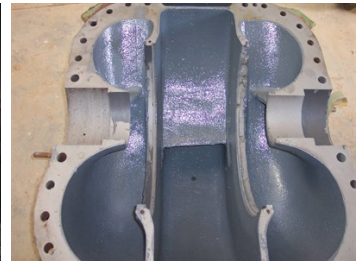
ID: 652

Industry: Buildings & Structures
Application: CEP-Centrifugal Pumps
Substrate: Cast Iron
Products: * Belzona® 1311 (Ceramic R-Metal) ,
* Belzona® 1321 (Ceramic S-Metal) ,

Customer Location: Water Plant, Egypt
Application Date: December 2004

Problem

The four pumps were very badly eroded and corroded. As a result, the flow rate was much lower than the normal flow rate.



Photograph Descriptions

- * General view of the four deteriorated pumps ,
- * Corroded-eroded pump and cut water ,
- * Rebuilding the eroded areas inside the pump ,
- * Completed application ,

Application Situation

Four split casing pumps

Application Method

Application was carried out in accordance with Belzona Know-How System Leaflets CEP-1, CEP-2, CEP-3 and CEP-5.

Belzona Facts

Each of the four pumps was facing many problems in the cutwater and the wear ring seats which decreased the efficiency of the plant. Instead of buying new pumps Belzona was used to repair the old pumps providing extra protection while restoring the plants power without resorting to buying new expensive units.

For more examples of Belzona Know - How In Action, please visit <https://khia.belzona.com>

ISO 9001:2015
FS 695214
ISO 14001:2015
EMS 695213

Belzona products are
manufactured under an ISO
9000 Registered Quality
Management System.

www.belzona.com


BELZONA®
Repair • Protect • Improve