

REBUILD AND PROTECTION OF A FRANCIS TURBINE WITH BELZONA

ID: 711

Industry: Power

Customer Location: Hydroelectric Power Plant, Czech Republic

Application: CEP-Centrifugal Pumps

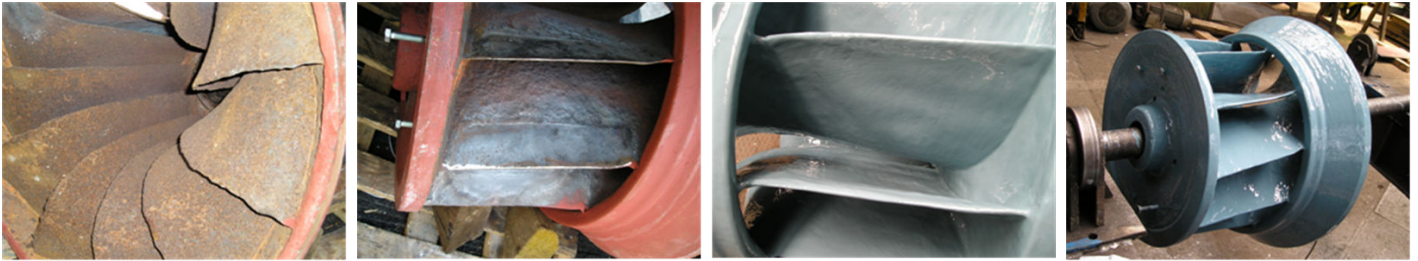
Application Date: June 2005

Substrate: Steel

Products: Belzona® 1111 (Super Metal)<div>Belzona® 1341 (Supermetalglide)</div>

Problem

The turbine was not running efficiently due to extensive erosion and corrosion damage.



Photograph Descriptions

* Application Situation , * After Grit Blasting , * After Rebuilding With Belzona® 1111 , * After Coating With Belzona® 1341 ,

Application Situation

Francis turbine runner

Application Method

The application was carried out in accordance with Belzona Know-How System Leaflets CEP-8 and -10

Belzona Facts

The client had tried to repair the blades with weld repairs but these had caused the blades to distort and warp. The Belzona was an attractive solution because it was quick and simple to rebuild the damaged blades and to protect and enhance the efficiency of the turbine with Belzona materials.

For more examples of Belzona Know - How In Action, please visit <https://khia.belzona.com>

ISO 9001:2015

FS 695214

ISO 14001:2015

EMS 695213

Belzona products are
manufactured under an ISO
9000 Registered Quality
Management System.

www.belzona.com

BELZONA
Repair • Protect • Improve