

# BELZONA UPGRADES WEAR PLATES ON PELTON TURBINE

ID: 714

Industry: Power

Application: SHM-Solids Handling Machinery

Customer Location: Hydroelectric Power Plant, France

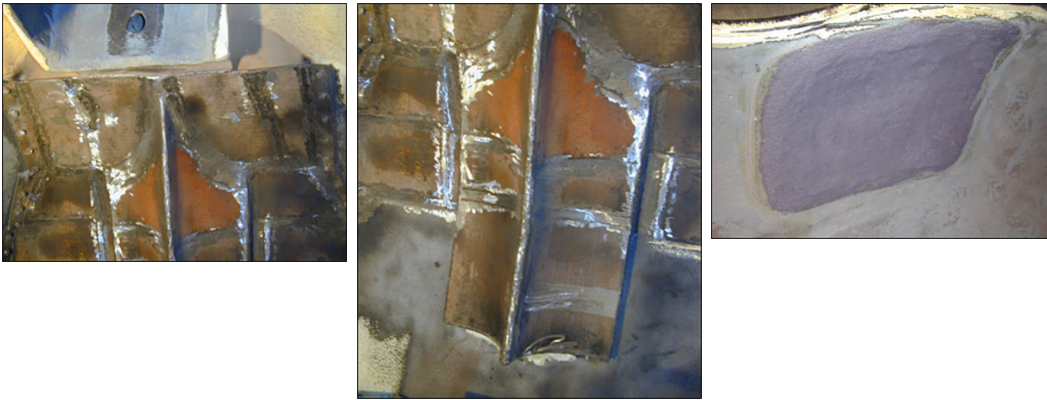
Application Date: May 2001

Substrate: Steel

Products: Belzona® 1311 (Ceramic R-Metal) </div>Belzona® 5811 (Immersion Grade) </div><div>Belzona® 1812 (Ceramic Carbide FP)</div>

## Problem

Vibration had lead to weld failure on the splash plates and the anti-wear plates needed replacing



## Photograph Descriptions

\* Application Situation , \* Weld Failure , \* Belzona® 1812 in Situation ,

## Application Situation

Pelton Turbine

## Application Method

The application was carried out in accordance with modified Belzona Know-How System Leaflets SHM-11 & GSS-9.

Belzona® 1311 used to seal around wear plates and Belzona® 5811 was injected into the cavity behind the wear plates. Belzona® 1812 then applied over the top as a sacrificial coating.

## Belzona Facts

The Belzona® 1812 was reapplied every year and 5 years after the initial application the anti-wear plates were still in place.

For more examples of Belzona Know - How In Action, please visit <https://khia.belzona.com>

ISO 9001:2015

FS 695214

ISO 14001:2015

EMS 695213

Belzona products are

manufactured under an ISO

9000 Registered Quality

Management System.

[www.belzona.com](http://www.belzona.com)

**BELZONA**  
Repair • Protect • Improve