

Repairing power station cooling water pumps with Belzona

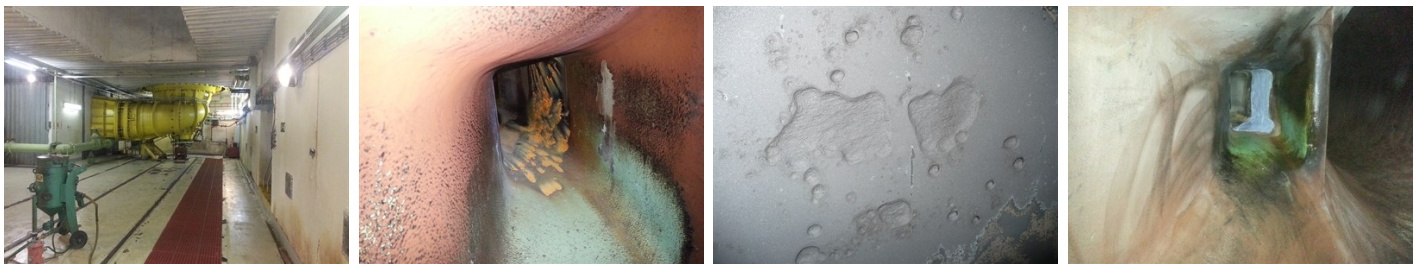
ID: 7602

Industry: Power
Application: CEP-Centrifugal Pumps
Substrate: Cast iron
Products: * Belzona 1311 (Ceramic R Metal) ,
* Belzona 1341 (Supermetalgilde) ,

Customer Location: Power station, Slovakia
Application Date: 2014

Problem

This pump had been in service for 35 years and was suffering erosion corrosion damage due to constant water flow.



Photograph Descriptions

- * 1. TG pump ,
- * 2. Damaged area ,
- * 3. After blasting ,
- * 4. After Belzona 1311 and Belzona 1341 application. ,

Application Situation

Main cooling water pump.

Application Method

Application was carried out in accordance with Belzona Know-How System Leaflet CEP - 3 and CEP - 5

Belzona Facts

Welding of these damaged parts would have been very difficult and taken a long time. Belzona solution is quick and with perfect quality. Belzona provides a corrosion resistant surface.

For more examples of Belzona Know - How In Action, please visit <https://khia.belzona.com>

ISO 9001:2015
FS 695214
ISO 14001:2015
EMS 695213

Belzona products are
manufactured under an ISO
9000 Registered Quality
Management System.

www.belzona.com


BELZONA®
Repair • Protect • Improve

Copyright © Belzona International Limited 2024