

BELZONA RE-COATS A LARGE GOULDS PUMP IN A PAPER MILL

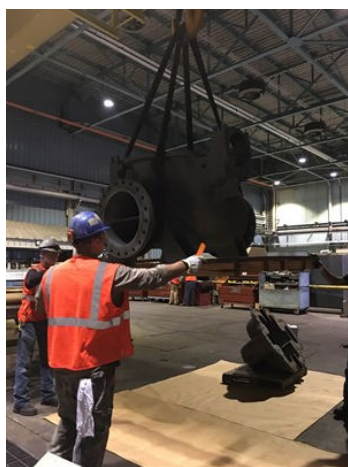
ID: 7652

Industry: Pulp & Paper
Application: CEP-Centrifugal Pumps
Substrate: Cast Iron
Products: * Belzona 1311 (Ceramic R-Metal) ,
* Belzona 1321 (Ceramic S-Metal) ,

Customer Location: Florida, USA
Application Date: May, 2017

Problem

The pump had been coated from the beginning of its service life with Belzona. Every few years it needed to be recoated due to the harsh work environment.



Photograph Descriptions

- * 1. Blasting out in the nn-house contractor's blast yard. ,
- * 2. Bringing in the pump with an overhead crane. ,
- * 3. Application complete. ,
- * 4. Application complete. ,

Application Situation

A large Goulds Split Case Pump that has worked 24/7 in a paper mill for many years.

Application Method

Old coating was blasted off with Black Beauty to reach the cleanliness profile required by Belzona. Belzona 1311 was applied to smooth out all rough areas. Two coats of Belzona 1321 were applied with brushes. The application was carried out in accordance with CEP-3 and CEP-5 Belzona System Leaflets.

Belzona Facts

For more examples of Belzona Know - How In Action, please visit <https://khia.belzona.com>

ISO 9001:2015
FS 695214
ISO 14001:2015
EMS 695213

Belzona products are
manufactured under an ISO
9000 Registered Quality
Management System.

www.belzona.com


BELZONA
Repair • Protect • Improve

This paper mill always coats pumps, old and new, with Belzona because it has had such good luck with longevity of their pumps using this method.

For more examples of Belzona Know - How In Action, please visit <https://khia.belzona.com>

ISO 9001:2015
FS 695214
ISO 14001:2015
EMS 695213

Belzona products are
manufactured under an ISO
9000 Registered Quality
Management System.

www.belzona.com



Copyright © Belzona International Limited 2025