

BELZONA REFURBISHES ENTRANCE STEPS OUTSIDE A MUNICIPAL BUILDING

ID: 7683

Industry:

Application: FPA-Floor Problem Areas

Substrate: Concrete

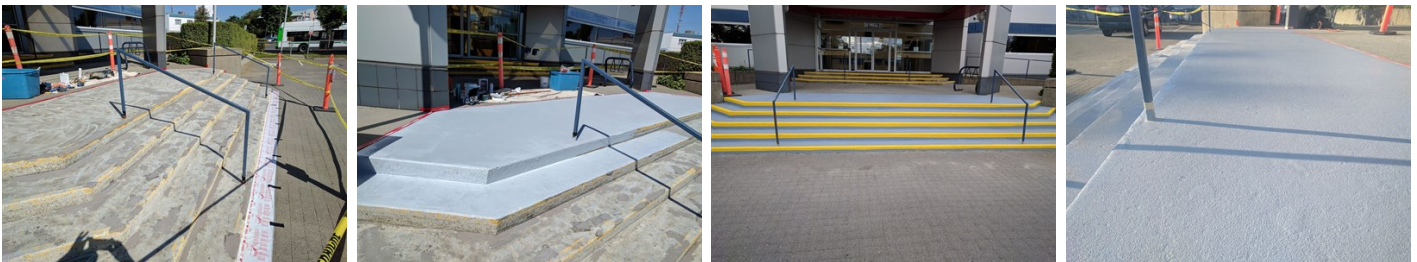
Products: * Belzona 4111 (Magma Quartz) ,
* Belzona 5231 (SG Laminate) ,
* Belzona 9232 (Aggregate) ,
* Belzona 5233 ,

Customer Location: BC, Canada

Application Date: May 2017

Problem

The entrance steps were looking "tired" and needed to be repaired and re-coated.



Photograph Descriptions

- * 1. The original coating removed ,
- * 2. A full coat of Belzona 5231 (SG Laminate) in light grey applied to the prepared surface, saturated with Belzona 9232 (Lt Grey Quartz Aggregate) and over-coated with Belzona 5233. ,
- * 3. All stair tread edges were highlighted with safety yellow. ,
- * 4. Close up of completed stair surface. ,

Application Situation

Entrance steps

Application Method

The application was carried out in accordance with Belzona Know-How System Leaflet FPA-1. The original coating was removed using a Vacu-Grinder and the damaged areas rebuilt with Belzona® 4111 (Magma Quartz). A full coat of Belzona® 5231 (SG Laminate) (Lt Grey) was applied to the prepared surface and saturated with Belzona® 9232 (Lt Grey Quartz Aggregate) and over-coated with Belzona 5233 in Grey. All stair tread edges were highlighted with safety yellow.

Belzona Facts

This municipality trusted Belzona based on the previous successes.

For more examples of Belzona Know - How In Action, please visit <https://khia.belzona.com>

ISO 9001:2015

FS 695214

ISO 14001:2015

EMS 695213

Belzona products are

manufactured under an ISO

9000 Registered Quality

Management System.

www.belzona.com


BELZONA®
Repair • Protect • Improve