

OLD PUMPS REPAIRED, PROTECTED AND IMPROVED WITH BELZONA

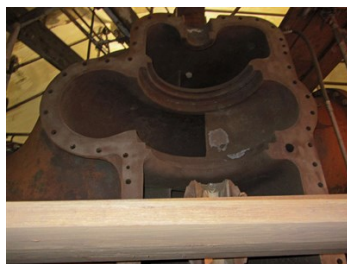
ID: 7685

Industry: Marine
Application: CEP-Centrifugal Pumps
Substrate: Cast Iron
Products: * Belzona 1121 ,
* Belzona 1341 ,

Customer Location: Dry Dock Facility, BC, Canada
Application Date: August 2017

Problem

The pumps were damaged by erosion-corrosion due to the salt content in the water they were pumping. Holes had developed in some of the cast iron casings and stuffing boxes also needed major rebuilding. Although the pumps were old, replacing them was not possible.



Photograph Descriptions

- * 1. 30 ft high pump. ,
- * 2. Showing damage from erosion-corrosion. ,
- * 3. Application of Belzona 1341 Blue in progress. ,
- * 4. Complete application. ,

Application Situation

Pumps housing building at a Canadian historic site. 30 ft high pumps.

Application Method

The application was carried out in accordance with modified versions of Belzona Know-How System Leaflets CEP-1 and CEP-3. Belzona 1121 was used to rebuild and repair the eroded surfaces. Belzona 1341 was used to improve the pumps performance. Due to the large size of the pumps and related inlets and outlets, it was decided to blast in stages and then protect with Belzona 1341. This was followed by a skim coat of Belzona 1341/1121 mixture to fill in most of the lower depressions. The remaining voids were filled with Belzona 1121. The units received a final brush blast before 2 successive coats of Belzona 1341 grey and blue were

For more examples of Belzona Know - How In Action, please visit <https://khia.belzona.com>

ISO 9001:2015
FS 695214
ISO 14001:2015
EMS 695213

Belzona products are
manufactured under an ISO
9000 Registered Quality
Management System.

www.belzona.com


BELZONA
Repair • Protect • Improve

applied.

Belzona Facts

The project spanned 3 years a the dry dock had to remain in service all the time as a result of one pump had to be operational all the time. The dry dock continues to use Belzona products and solutions for many problems associated with the dry dock.

For more examples of Belzona Know - How In Action, please visit <https://khia.belzona.com>

ISO 9001:2015
FS 695214
ISO 14001:2015
EMS 695213

Belzona products are
manufactured under an ISO
9000 Registered Quality
Management System.

www.belzona.com

