

BELZONA REPAIRS A PAPER MILL PUMP

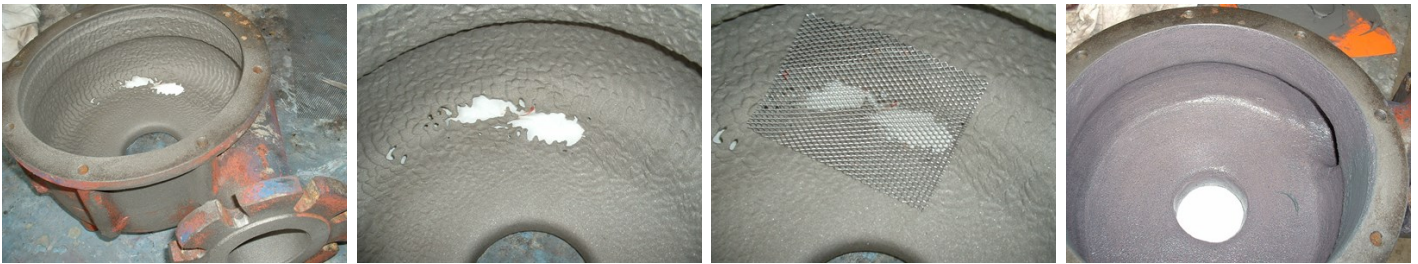
ID: 7757

Industry: *Pulp & Paper*
Application: *CEP-Centrifugal Pumps*
Substrate: *Cast iron*
Products: ** Belzona 1311 (Ceramic R-Metal) ,*
** Belzona 1812 (Ceramic Carbide) ,*

Customer Location: *France*
Application Date: *June 2008*

Problem

A paper pulp pump was severely damaged by abrasion because of the presence of paper clips and staples in the pulp it transports. The existing coating could not withstand this abrasive paste which caused impingement.



Photograph Descriptions

- * Pump casing severely damaged by abrasion. ,
- * Zoom on the hole resulted from the circulation of abrasive fluid. ,
- * Use of a steel reinforcement mesh to rebuild the casing. ,
- * Completed application. ,

Application Situation

Because the pump casing was severely damaged, the pump was out of service and needed to be either replaced or fixed quickly.

Application Method

Application method was carried out according to Belzona Know-How System Leaflet CEP-05 and SHM-11. Belzona 1311 was used on the major holes with a steel reinforcement sheet to rebuild the pump casing. Then, Belzona 1812 was applied overall the inside surface of the pump casing to offer a protection against erosion.

Belzona Facts

The customer said it was better to repair the equipment with Belzona products than to replace it. He realised indeed, that the repaired and coated pumps usually last 3 times longer than new ones.

For more examples of Belzona Know - How In Action, please visit <https://khia.belzona.com>

ISO 9001:2015
FS 695214
ISO 14001:2015
EMS 695213

Belzona products are
manufactured under an ISO
9000 Registered Quality
Management System.

www.belzona.com

**BELZONA**
Repair • Protect • Improve