

Belzona repairs and protects a concrete pump volute on a water cooling system

ID: 7897

Industry: Power

Application: WPA-Wall Problem Areas

Substrate: Concrete

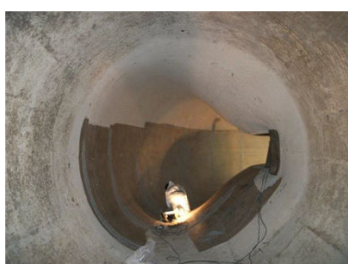
Products: * Belzona 4111 (Magma Quartz) ,
* Belzona 1321 (Ceramic S-Metal) ,

Customer Location: France

Application Date: September 2011

Problem

The pump volute presented cracks and wear and needed to be rebuilt before it would propagate.



Photograph Descriptions

- * 1- After the surface preparation, conditioner application ,
- * 2- Application of Belzona 4111 ,
- * 3- Final application ,

Application Situation

Concrete inside a pump circulating cooling water to a nuclear power plant.

Application Method

Application was carried out with an adapted version of Belzona System Leaflet FPA-01. After the surface preparation, the conditioner was applied and Belzona 4111 was used to rebuild the damaged area especially around the cutwater and all around the volute. Then, Belzona 1321 was used to protect the walls against erosion/corrosion.

Belzona Facts

The 2 volutes were repaired during the expected shutdown period of the equipment which means that it did not impact the production.

For more examples of Belzona Know - How In Action, please visit <https://khia.belzona.com>

ISO 9001:2015

FS 695214

ISO 14001:2015

EMS 695213

Belzona products are
manufactured under an ISO
9000 Registered Quality
Management System.

www.belzona.com


BELZONA®
Repair • Protect • Improve