

BELZONA REPAIR TO TURBINE STATIONARY BLADE HOLDER

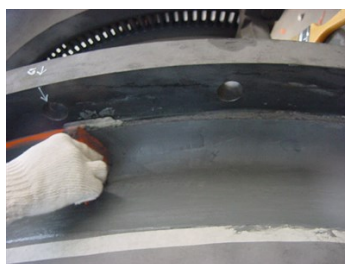
ID: 803

Industry: Power
Application: CEP-Centrifugal Pumps
Substrate: Cast Iron ASTM A27
Products: * Belzona® 1111 (Super Metal) ,
* Belzona® 1591 (Ceramic XHT) ,

Customer Location: Geothermal Power Station in Indonesia
Application Date: August, 2006

Problem

Erosion-corrosion on seating area of the upper and lower halves of the stationary blade holder. This had been caused by many years exposure to saturated steam.



Photograph Descriptions

- * View of the Stationary Blade Holders ,
- * Typical damage found on the seating area after blasting ,
- * Template in place to form the Belzona® 1111 ,
- * Job completed with Belzona® 1591 ,

Application Situation

Stationary Blade Holder

Application Method

Application was carried out in accordance with Belzona Know How System Leaflet CEP-3 and CEP-5.

Belzona Facts

Belzona was used because there was no other suitable solution to protect Blade Holder from erosion-corrosion. Belzona® 1511 would now be recommended for rebuilding in place of Belzona® 1111.

For more examples of Belzona Know - How In Action, please visit <https://khia.belzona.com>

ISO 9001:2015
FS 695214
ISO 14001:2015
EMS 695213

Belzona products are
manufactured under an ISO
9000 Registered Quality
Management System.

www.belzona.com


BELZONA®
Repair • Protect • Improve