

Belzona Repairs Valve Guide

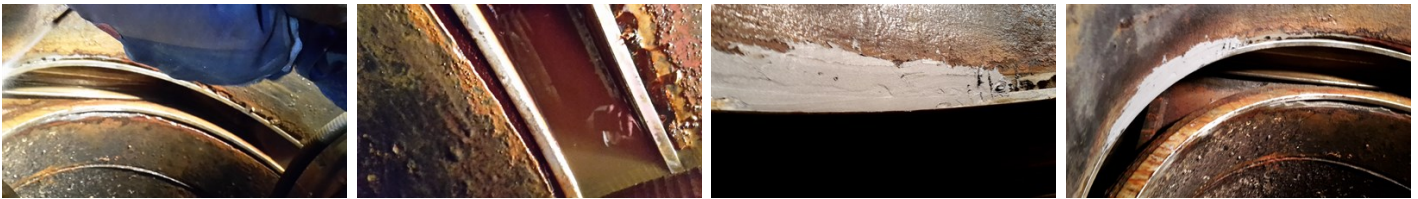
ID: 8215

Industry: Marine
Application: VPF-Valves, Pipes and Fittings
Substrate: Cast Iron
Products: * Belzona 1161 (Super UW-Metal) ,

Customer Location: South West England
Application Date: May 2019

Problem

The valve guides had corroded due to galvanic attack, all of the Cast iron that was in contact with the Carbon steel had corroded away as a result and the guides were loose within their locations. Due to this no full seal could be created, thus losing tons of water every hour.



Photograph Descriptions

- * 1. U-Shaped channel with corrosion damage around the external edge where it meets the cast iron. ,
- * 2. Further channel damage. ,
- * 3. Channel filled with Belzona 1161. ,
- * 4. Application complete. ,

Application Situation

There are three pumps at the bottom of the main dock pump house. The pumps are impounding pumps for the very busy commercial docks, these pump in sea water to lift or lower the dock level for incoming or outgoing vessels. The valves act as shut offs for the sea water in and out of the dock and are fitted in line with the impounding pumps.

Application Method

In conjunction with Belzona System Leaflet VPF-04, all areas were grit blasted back to good sound substrate and any salt was reduced to an acceptable levels using a chemical cleaner and high temperature washing. The new guides were installed and located using fixings, prior to application of Belzona 1161.

Belzona Facts

Due to the age and location of the valves, replacements would have been bespoke and very costly, added to this loss of efficiency of the valves meant the impounding pumps needed to be operated again after several hours to maintain the levels within the dock.

For more examples of Belzona Know - How In Action, please visit <https://khia.belzona.com>

ISO 9001:2015
FS 695214
ISO 14001:2015
EMS 695213

Belzona products are
manufactured under an ISO
9000 Registered Quality
Management System.

www.belzona.com


BELZONA
Repair • Protect • Improve