

Belzona Protects Ice Breaker Research Ship

ID: 8246

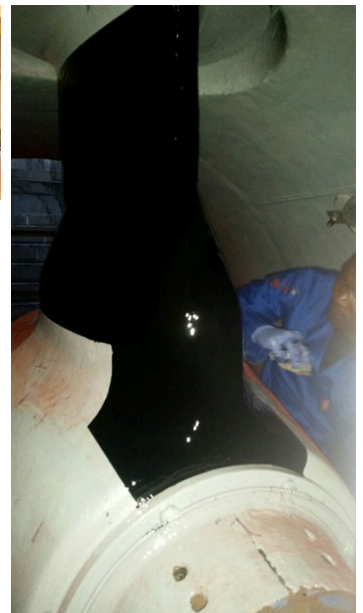
Industry: *Marine*
Application: *SOS-Ships and Offshore Structures*

Customer Location: *Cape Town, South Africa*
Application Date: *January 2020*

Substrate: *Steel*
Products: ** Belzona 1111 (Super Metal) ,*
** Belzona 1341 (SuperMetalGlide) ,*
** Belzona 2141 (ACR-Fluid Elastomer) ,*

Problem

Areas and fixtures on the hull have been subjected to wear and erosion in service, leaving some of the steel exposed and open to corrosion.



Photograph Descriptions

- * Repair area prior to application ,
- * Detailed damaged area with steel loss ,
- * Coating application complete ,
- * Additional protection added to most severely affected areas ,

Application Situation

An icebreaking polar supply and research ship returned to dry dock in South Africa for repairs after polar exploration.

For more examples of Belzona Know - How In Action, please visit <https://khia.belzona.com>

ISO 9001:2015
FS 695214
ISO 14001:2015
EMS 695213

Belzona products are
manufactured under an ISO
9000 Registered Quality
Management System.

www.belzona.com



Application Method

The application was carried out in accordance with Belzona System Leaflets SOS-01 & SOS-02.

Belzona Facts

The original corrosion paint has proven to be not strong enough to handle the harsh sea ice conditions. Belzona was chosen due to its erosion resistance and durability, to prevent costly damage in the future, while steel loss was still minimal. 192 sqm was covered in total.

For more examples of Belzona Know - How In Action, please visit <https://khia.belzona.com>

ISO 9001:2015
FS 695214
ISO 14001:2015
EMS 695213

Belzona products are
manufactured under an ISO
9000 Registered Quality
Management System.

www.belzona.com

