

Belzona® Repairs Robotic Arm

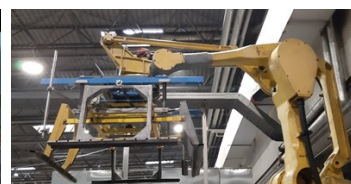
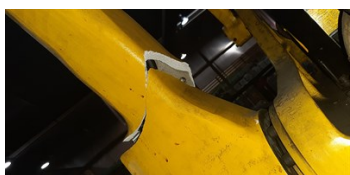
ID: 8477

Industry: Food & Drink
Application: VPF-Valves, Pipes and Fittings
Substrate: Hard Aluminium
Products: * Belzona 1111 (SuperMetal) ,
* Belzona 9341 ,

Customer Location: Brewery, Romania
Application Date: February, 2021

Problem

The robotic arm, that lifts and moves around large plastic beer boxes, from stack to process lines, was totally broken due to the metal wear. It had been working continuously for the last 20 years.



Photograph Descriptions

- * 1. The view of the broken robotic arm ,
- * 2. The view of the surface prepared by using the MBX ,
- * 3. The two pieces of the arm with the wrapping of the reinforcement sheet ,
- * 4. The robotic arm with the completed repair .

Application Situation

Broken robotic arm

Application Method

After proper surface preparation, the application was carried out by putting the metal plates with screws on the broken arm. Belzona 1111 was applied between the two pieces of metal right on the tear of the pieces. After bonding the two pieces of the arm, the reinforcement sheet (Belzona 9341) was wrapped around the entire damaged area, which was wet out with Belzona 1111.

Belzona Facts

The use of Belzona products prevents the replacement of the full robot arm, which is very expensive and the downtime would have been around 7 weeks. Belzona provided fast return to operation of the robotic arm – 2 days. Inspection was carried out 3 weeks after putting the arm in operations. The robotic arm is in very good shape and works according to specification.

For more examples of Belzona Know - How In Action, please visit <https://khia.belzona.com>

ISO 9001:2015
FS 695214
ISO 14001:2015
EMS 695213

Belzona products are
manufactured under an ISO
9000 Registered Quality
Management System.

www.belzona.com


BELZONA®
Repair • Protect • Improve