

Turbo Separator Repair With Belzona 1818

ID: 8480

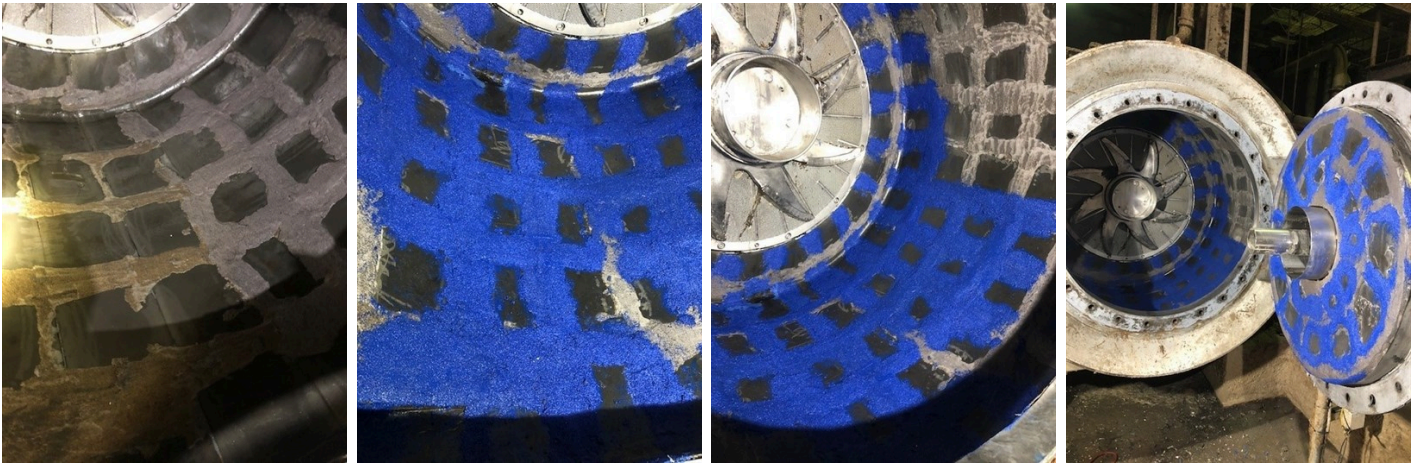
Industry: *Pulp & Paper*
Application: *SHM-Solids Handling Machinery*

Customer Location: *Brisbane, Australia*
Application Date: *March 2021*

Substrate: *Basalt Tiles*
Products: ** Belzona 1818 ,*

Problem

The Turbo Separator is a disc screen specially designed for coarse screening, primarily removing light and heavy impurities from wastepaper. The unit is lined with thick Basalt tiles and has a hard-wearing grouting compound applied over the joints between the tiles. Over the years, this grouting compound would wear away leaving the joints unprotected. This is a very abrasive environment.



Photograph Descriptions

- * 1. Worned grouting system ,
- * 2. Application in progress ,
- * 3. Application in progress ,
- * 4. Application complete ,

Application Situation

Turbo separator in Paper recycling plant

Application Method

For more examples of Belzona Know - How In Action, please visit <https://khia.belzona.com>

ISO 9001:2015
FS 695214
ISO 14001:2015
EMS 695213

Belzona products are
manufactured under an ISO
9000 Registered Quality
Management System.

www.belzona.com

**BELZONA**
Repair • Protect • Improve

After cleaning out the pulp, the Turbo separator was dried out using rags. Surface preparation was achieved using a diamond blade on an angle grinder to create a "key" for Belzona 1818. Belzona 1818 was mixed and applied with ease, including overhead areas.

Belzona Facts

Previously, Belzona 1812 was used to repair this turbo separator. Belzona 1818 provided: - Easier vertical and overhead application - Lower surface preparation needs - Quicker back to service - Time and cost savings.

For more examples of Belzona Know - How In Action, please visit <https://khia.belzona.com>

ISO 9001:2015
FS 695214
ISO 14001:2015
EMS 695213

Belzona products are
manufactured under an ISO
9000 Registered Quality
Management System.

www.belzona.com

