

Belzona 1818 screened for success

ID: 8487

Industry: Pulp & Paper

Application: SHM-Solids Handling Machinery

Customer Location: Dallas-Fort Worth Metroplex, Texas, USA

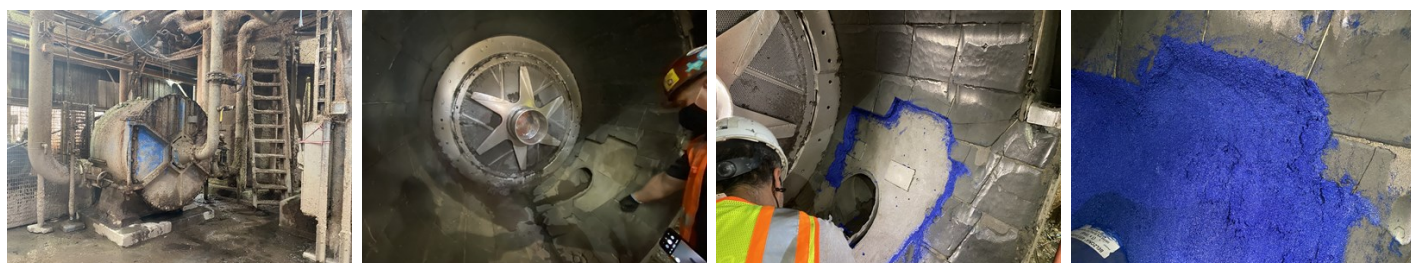
Application Date: April, 2021

Substrate: Steel and Ceramic Tiles

Products: * Belzona 1818 ,

Problem

During normal operation, a large metal foreign object went through the turbo separator. The internal lining was severely damaged in a 4ft x 3ft area. The process of replacing tiles is a time-consuming operation and the mill did not have the time available to make their typical repairs. In order to operate the equipment, they needed a repair to be completed in less than twelve hours from shut down to start up.



Photograph Descriptions

- * External view of Turbo Separator in the mill ,
- * Internal view of Turbo Separator showing damaged/lost tiles ,
- * Application of 1818 commencing ,
- * Additional 1818 being applied ,

Application Situation

A major paper recycling plant that operates almost full time and only stops production for twelve hours, once a month to perform routine maintenance. To avoid erosion and abrasion along in an attempt to prolong the life of their Turbo Separators, they are lined with two-inch-thick ceramic tiles. This type of disc screen is designed specifically for coarse screening in pulp strainers with high trash and flake material, such as recycled paper, which is what the mill uses as a feedstock to make 100% recycled kraft paper and packaging.

Application Method

The application was completed using a modified version of SHM-07. Loose and damaged tiles were removed. The steel substrate and ceramic tiles were abrasive blasted to create a suitable profile. Belzona 1818 was used to rebuild the area of lost tiles and provide an abrasion-resistant coating.

For more examples of Belzona Know - How In Action, please visit <https://khia.belzona.com>

ISO 9001:2015

FS 695214

ISO 14001:2015

EMS 695213

Belzona products are
manufactured under an ISO
9000 Registered Quality
Management System.

www.belzona.com


BELZONA[®]
Repair • Protect • Improve

Belzona Facts

The customer had confidence in the Belzona 1800 series, as seven years ago they used Belzona 1812 to grout and make small repairs to the same equipment. These repairs were still in excellent condition. A total of 112 Kg was used to rebuild the area. The application from the start to completion was completed in less than 7 hours and the equipment was able to be restarted with no delays.

For more examples of Belzona Know - How In Action, please visit <https://khia.belzona.com>

ISO 9001:2015
FS 695214
ISO 14001:2015
EMS 695213

Belzona products are
manufactured under an ISO
9000 Registered Quality
Management System.

www.belzona.com

