

# Belzona Restores a pump Impellor

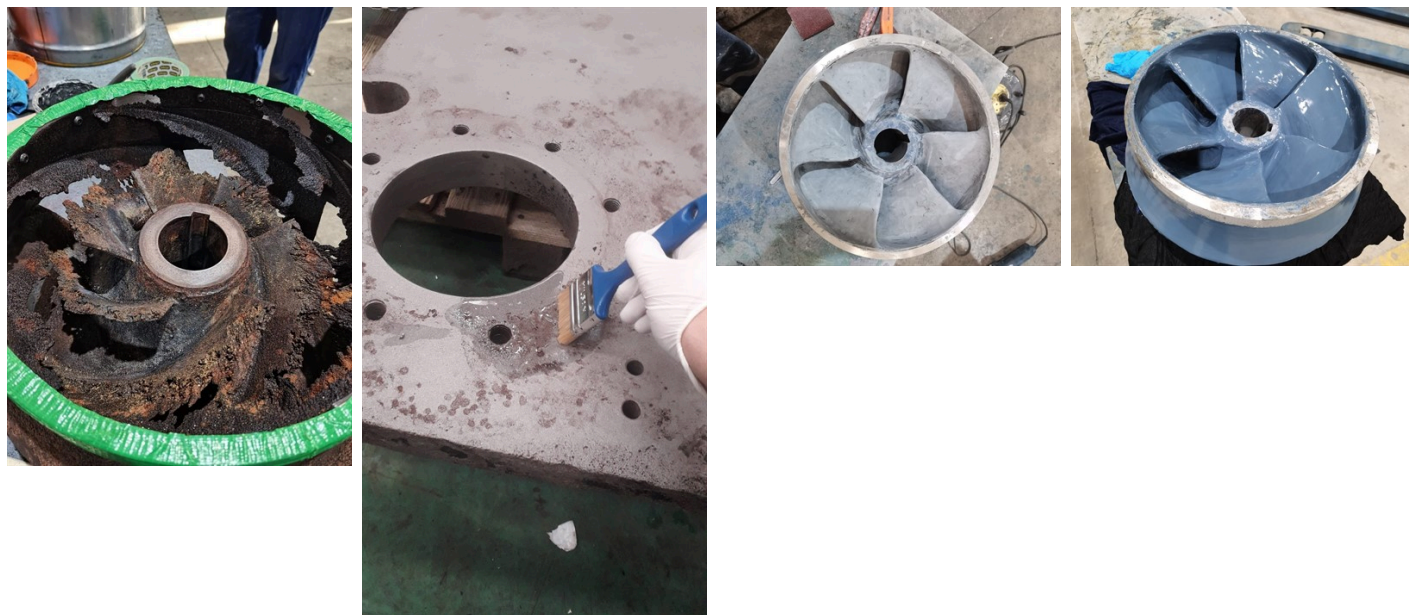
ID: 8874

Industry: *Fluid Flow*  
Application: *CEP-Centrifugal Pumps*  
Substrate: *Carbon steel*  
Products: *Belzona 1311 (Ceramic R Metal),*  
*Belzona 1341 (SuperMetalGlide),*

Customer Location: *South Africa*  
Application Date: *August 2022*

## Problem

*The impeller had suffered from significant erosion corrosion damage, leading to the need to replace.*



## Application Situation

A pump had been earmarked to go for scrap, but Belzona stepped in to repair and improve.

## Application Method

Application was carried out in accordance to Belzona system leaflet CEP-01. The impeller was first blasted to achieve a min 75 micron profile and SA2.5 finish prior to the rebuilding. It was then balanced before being returned to service.

## Belzona Facts

Belzona was able to renew this heavily worn and corroded pump impeller, extending its life span further - saving it from the scrap heap!

For more examples of Belzona Know - How In Action, please visit <https://khia.belzona.com>

ISO 9001:2015  
FS 695214  
ISO 14001:2015  
EMS 695213

Belzona products are  
manufactured under an ISO  
9000 Registered Quality  
Management System.

[www.belzona.com](http://www.belzona.com)

  
**BELZONA®**  
Repair • Protect • Improve

Copyright © Belzona International Limited 2025