

Wastewater Pump Impeller

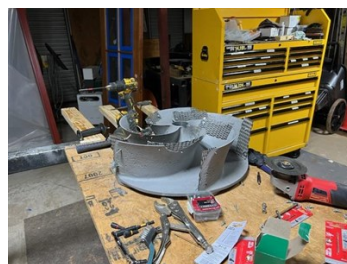
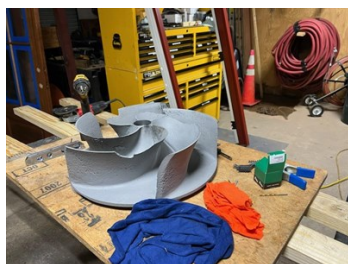
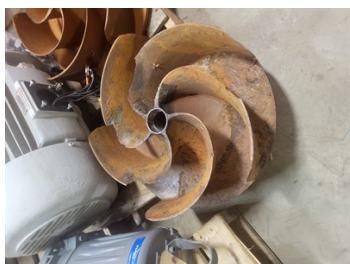
ID: 8912

Industry: Water / Wastewater
Application: CEP-Centrifugal Pumps
Substrate: Carbon steel
Products: Belzona 1111 Supermetal
Belzona 1321 S-Metal

Customer Location: Columbia, SC
Application Date: 12/17/22

Problem

Pump Impeller was pitted and damaged, and missing chunks out of a few of the veins, and they were wore down on the ends. We needed to build up the veins and pitted areas, and then coat to protect the impeller from further damage in the future.



Damaged Impeller

Impeller after being blasted

Impeller built up with expanded metal

Impeller rebuilt with expanded metal, Belzona 1111 Supermetal, and coated with Belzona 1321 S-Metal.

Application Situation

Wastewater impeller was damaged and needed to be rebuilt and coated.

Application Method

We sandblasted the impeller to a 3 mil profile. Built up the damaged areas with expanded metal and Supermetal. Then we applied two coats Belzona 1321 S-Metal.

Belzona Facts

The application was less expensive than buying a brand-new impeller, plus, we were able to salvage an impeller that was going to be thrown out. They used Belzona because it was the best choice of repairing and protecting the impeller.

For more examples of Belzona Know - How In Action, please visit <https://khia.belzona.com>

ISO 9001:2015
FS 695214
ISO 14001:2015
EMS 695213

Belzona products are
manufactured under an ISO
9000 Registered Quality
Management System.

www.belzona.com

