

# Protection of Wastewater Centrifuge

ID: 9331

Industry: Water / Wastewater

Customer Location: Pickering, Ontario

Application: CEP-Centrifugal Pumps

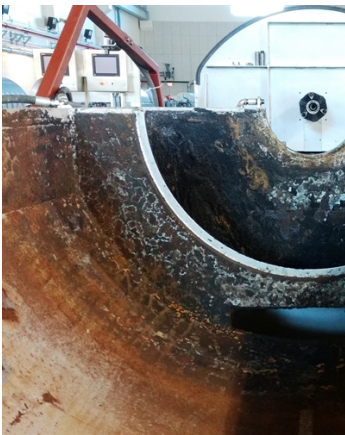
Application Date: September 2020

Substrate: Carbon steel

Products: Belzona 1111 (Super Metal), Belzona 1341 (Supermetalglide)

## Problem

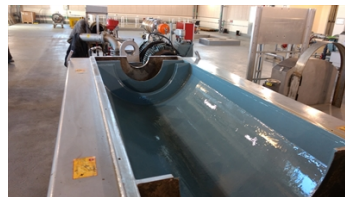
The centrifuge was suffering from erosion-corrosion and scale buildup. They needed a product that would protect the equipment but also help reduce the buildup and improve the efficiency of the equipment.



Original corroded substrate



During surface preparation



First Coat Application



Finished application

## Application Situation

This is a large wastewater plant that processes approximately 80% of the waste generated by two populated municipalities in the GTA. They had several of these dewatering centrifuges and over the years they had been successfully coating them with Belzona.

## Application Method

The steel substrate was prepared to and in accordance with SSPC-SP 11, Bare Metal Power Tool Cleaning. This method of surface preparation was chosen as the plant was in operation and abrasive blasting was not an option. Once the substrate was prepared, Belzona 1111 was applied as a stripe coat to smooth out any defects, joints and seams. Belzona 1341 was then applied in two coats of alternate colors.

## Belzona Facts

Belzona 1341 has proven successful in protecting the equipment from erosion-corrosion but also in reducing the scaling and improving the efficiency of the equipment.

For more examples of Belzona Know - How In Action, please visit <https://khia.belzona.com>

ISO 9001:2015

FS 695214

ISO 14001:2015

EMS 695213

Belzona products are  
manufactured under an ISO  
9000 Registered Quality  
Management System.

[www.belzona.com](http://www.belzona.com)

Copyright © Belzona International Limited 2025

  
**BELZONA**  
Repair • Protect • Improve