

Solvents Pump Repair Belzona 1321 and Belzona 1121

ID: 9335

Industry: Oil & Gas

Application: CEP-Centrifugal Pumps

Substrate: Carbon steel

Products: Belzona 1121 (Super XL-Metal), Belzona 1321 (Ceramic S-Metal)

Customer Location: Plaquemine, LA

Application Date: April 2024

Problem

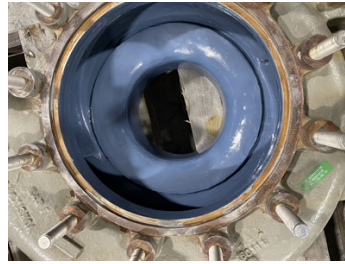
Drainage issues inside facility was causing backups. While dredging canals client took opportunity to improve pump for efficiency.



Close up of pitting BEFORE



Pump in place prior to improvements



Pump coated in Belzona

Application Situation

Pump was removed from site and repaired in climate-controlled shop to be returned to service within 48 hours.

Application Method

Abrasively blasted interior of parts as per specification.

(Angular Abrasives used to achieve 3 mil angular profile as per specifications.)

Made repairs at the inlet and filled in any pitting using Belzona 1121

Applied Belzona 1321 to interior parts as per product manufactures recommendations.

Belzona Facts

Higher Efficiency. Fast return.

For more examples of Belzona Know - How In Action, please visit <https://khia.belzona.com>

ISO 9001:2015

FS 695214

ISO 14001:2015

EMS 695213

Belzona products are
manufactured under an ISO
9000 Registered Quality
Management System.

www.belzona.com


BELZONA[®]
Repair • Protect • Improve

Copyright © Belzona International Limited 2024