

Belzona smooths out competition

ID: 9350

Industry: Buildings & Structures
Application: FPA-Floor Problem Areas
Substrate: Concrete
Products: Belzona 2221 (MP Fluid Elastomer), Belzona 4111 (Magma-Quartz), Belzona 5231 (SG Laminate)

Customer Location: Lafayette
Application Date: February 2024

Problem

The expansion joint had been damaged and breaking up grout from North to the west end surgical area.



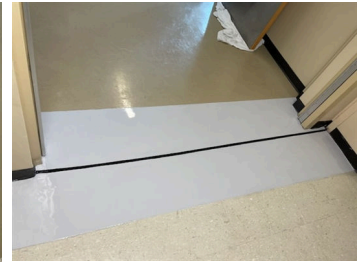
Removing existing expansion joint



After grout was removed



Finished smooth ride



completed smooth ride application

Application Situation

The other way they were being addressed was creating a big hump in the walkway and we could be smooth. Also we could be out in two days.

Application Method

Removed old expansion joint and chipped out grout around area. Grinded down concrete to make a smooth transition. Built up concrete with Belzona 4111, created expansion joint with Belzona 2221 and coated transition with Belzona 5231

Belzona Facts

Belzona saved the customer several complaint's with hump's in expansion joints and no more getting x ray machines hung up on floor.

For more examples of Belzona Know - How In Action, please visit <https://khia.belzona.com>

ISO 9001:2015
FS 695214
ISO 14001:2015
EMS 695213

Belzona products are
manufactured under an ISO
9000 Registered Quality
Management System.

www.belzona.com


BELZONA
Repair • Protect • Improve