

Plate patch on chip chute

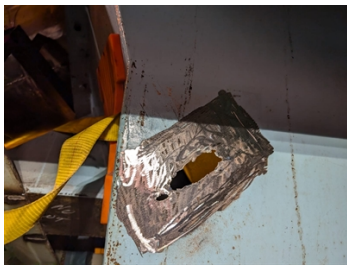
ID: 9567

Industry: Pulp & Paper
Application: TCC-Tanks and Chemical Containment Areas
Substrate: Carbon steel
Products: Belzona 1212

Customer Location: Castlegar
Application Date: September 2024

Problem

Hole found in chip chute, causing a mess of material on the floor.



Hole prepared for repair.



Belzona 1212 used to bond plate.

Application Situation

Client required immediate assistance with a home in a chip chute. Using belzona fast curing composites we were able to get them back up and running in as little as 4 hours.

Application Method

Area cleaned and degreased. Surfaces hand tool prepared, cloth and metal patch used with Belzona 1212 for long term protection.

Belzona Facts

Fast curing times allowed the client to get operational as soon as 4 hours and back in production

For more examples of Belzona Know - How In Action, please visit <https://khia.belzona.com>

ISO 9001:2015
FS 695214
ISO 14001:2015
EMS 695213

Belzona products are
manufactured under an ISO
9000 Registered Quality
Management System.

www.belzona.com


BELZONA[®]
Repair • Protect • Improve