

Structural reinforcement of weakened pipe in a wastewater plant

ID: 9572

Industry: Water / Wastewater

Customer Location: Ontario

Application: VPF-Valves, Pipes and Fittings

Application Date: August 2021

Substrate: Carbon steel

Products: Belzona 1161 (Super UW-Metal), Belzona SuperWrap II

Problem

The existing pipe had become severely weakened over time and they needed to reinforce it to prevent future problems.



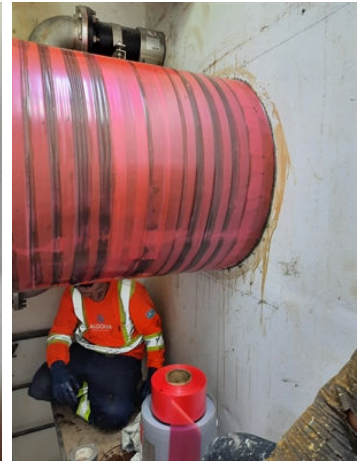
Defective pipe in need of reinforcement.



Plate bonding over the most critical area.



Applying SuperWrapII to strengthen the entire pipe section.



Completed repair.

Application Situation

Since this section was in a hard-to-reach area, replacing it would have been challenging. The Belzona solution enabled them to repair the pipe while it remained in service.

Application Method

The substrate was prepared using power tools. Due to severe deterioration of the bottom section, we decided to add a bonded plate for extra reinforcement. Following that, we applied three wraps of Belzona for complete structural reinforcement

Belzona Facts

The Belzona solution allowed the wastewater plant to repair the pipe without shutting it down, saving both time and money by avoiding expensive replacements and downtime. Unlike traditional methods, such as welding or full pipe replacement, which would have required a shutdown, Belzona's plate bonding and wrap system provided structural reinforcement while the pipe remained in service, offering a fast, effective, and durable repair.

For more examples of Belzona Know - How In Action, please visit <https://khia.belzona.com>

ISO 9001:2015

FS 695214

ISO 14001:2015

EMS 695213

Belzona products are
manufactured under an ISO
9000 Registered Quality
Management System.

www.belzona.com


BELZONA
Repair • Protect • Improve