

Lining of a yacht's diesel tanks

ID: 9645

Industry: *Marine*
Application: *TCC-Tanks and Chemical Containment Areas*

Customer Location: *Spanopoulos Shipyard (Salamina)*
Application Date: *October 2024*

Substrate: *Carbon steel*

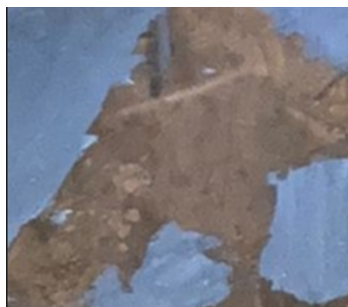
Products: *Belzona 1311 (Ceramic R-Metal), Belzona 1321 (Ceramic S-Metal)*

Problem

Two tanks that have been converted from ballast to diesel required lining at the base. The tanks covered 50 m² in total.



Yacht external view at the shipyard



Application of Belzona 1311 to rebuild pitted areas



Application of Belzona 1321 on top of Belzona 1311



Finished job

Application Situation

Belzona provided a long-term solution for meeting client expectations.

Application Method

Before 1311 was applied to the substrate after it was grit blasted. The lining material was Belzona 1321.

Belzona Facts

Belzona offered a protection to the tanks.

For more examples of Belzona Know - How In Action, please visit <https://khia.belzona.com>

ISO 9001:2015
FS 695214
ISO 14001:2015
EMS 695213

Belzona products are manufactured under an ISO 9000 Registered Quality Management System.

www.belzona.com

