

Chiller Tube Sheets 2/400 Ton

ID: 9710

Industry: Heating, Ventilation & Air Conditioning

Customer Location: Nashville TN

Application: HEX-Heat Exchangers

Application Date: January 2019

Substrate: Carbon steel

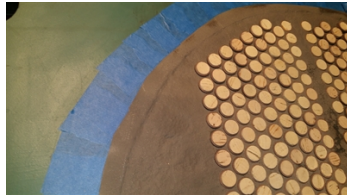
Products: Belzona 1121 (Super XL-Metal), Belzona 1321 (Ceramic S-Metal)

Problem

Chiller Tube Sheets damaged due to age.



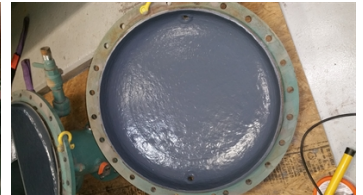
Tube sheet section damaged.



Preparation for coating application.



Rebuilding and protection of the tube sheet with Belzona 1121 and Belzona 1321.



Rebuilding and protection of the cover with Belzona 1121 and Belzona 1321.

Application Situation

Johnson Controls offered the solution of repairing with Belzona to give the unit a longer life.

Application Method

Mechanical contractor removed the covers our team corked the tubs and blasted the heads and covers. They repaired any needed areas with Belzona 1121 and coated the heads and covers with two coats of Belzona 1321.

Belzona Facts

Repairing saved the customer down time and thousands,

For more examples of Belzona Know - How In Action, please visit <https://khia.belzona.com>

ISO 9001:2015

FS 695214

ISO 14001:2015

EMS 695213

Belzona products are
manufactured under an ISO
9000 Registered Quality
Management System.

www.belzona.com

Copyright © Belzona International Limited 2025


BELZONA
Repair • Protect • Improve