

# Coating and rebuilding Multi-stage Pump with Belzona 1111 and Belzona 1341N

ID: 9752

Industry: Water / Wastewater

Customer Location: Saudi Arabia

Application: CEP-Centrifugal Pumps

Application Date: February 2025

Substrate: Carbon steel

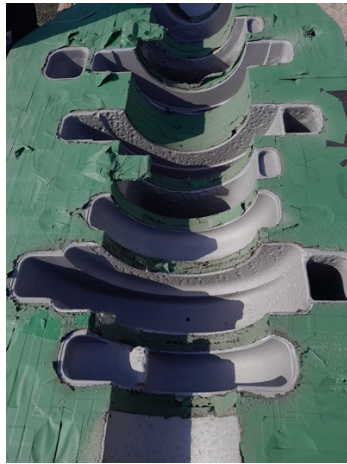
Products: Belzona 1111 (Super Metal), Belzona 1341N (Supermetalgilde)

## Problem

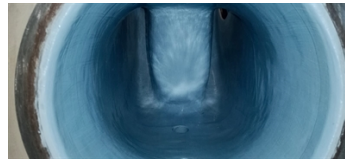
Multi-stage pump showed evidence of corrosion and erosion due to exposure to water.



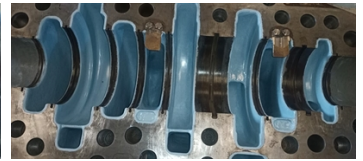
Pump condition before application



Pump condition after blasting



Pump component coated with Belzona 1341N



Pit filling with Belzona 1111 and coated with Belzona 1341N for the pump

## Application Situation

Customer is very satisfied from previous jobs that has been done with Belzona 1341N and he asked for repairing and coating this pump with Belzona 1111 and Belzona 1341N.

## Application Method

1. Surface preparation was achieved by grit blasting to reach near-white metal and a 75 µm profile, as per the manufacturer's Instructions for Use.
2. Pit filling with Belzona 1111 (Super Metal)
3. Overcoat the rebuilt surface with 2 coats of Belzona 1341N (Supermetalgilde), 250 µm each.

## Belzona Facts

This coating helps the customer to protect the pump, extend its 24/7 operation lifespan, and reduce power consumption. With Belzona coating system, customers save cost of downtime, power consumption and maintenance.

For more examples of Belzona Know - How In Action, please visit <https://khia.belzona.com>

ISO 9001:2015  
FS 695214  
ISO 14001:2015  
EMS 695213

Belzona products are  
manufactured under an ISO  
9000 Registered Quality  
Management System.

[www.belzona.com](http://www.belzona.com)

**BELZONA**  
Repair • Protect • Improve