

# BELZONA SOLUTION FOR REFURBISHMENT OF PUMP CASINGS

ID: 9755

Industry: Power

Application: CEP-Centrifugal Pumps

Substrate: Carbon steel

Products: Belzona 1121 (Super XL-Metal), Belzona 1341 (Supermetalgilde), Belzona 9111 (Cleaner Degreaser)

Customer Location: ABU DHABI, UNITED ARAB EMIRATES

Application Date: February 2025

## Problem

A power station customer is experiencing severe corrosion and material loss in their potable water centrifugal pumps, which are critical for water displacement circulation. This deterioration is driving up maintenance costs, reducing efficiency, and causing unexpected downtime. To restore performance and ensure long-term reliability, the customer requires a durable solution to mitigate corrosion and extend the equipment's service life.



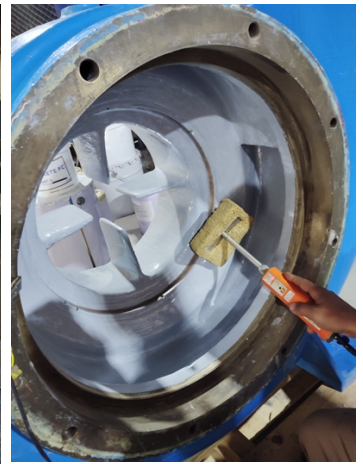
Severe corrosion and material loss in centrifugal pumps.



Surface was grit blasted to achieve the required profile.



Application of Belzona 1121 for a strong, long-lasting restoration.



The surface was coated with 2 coats of Belzona 1341.

## Application Situation

The pump casings required a high-performance coating to repair existing damage and provide long-term protection against erosion, corrosion, and wear.

## Application Method

The application followed Belzona Know-How System Leaflets CEP-5, CEP-6, and CEP-10.

1. After thorough cleaning, the surface was grit blasted to achieve the required profile.
2. Damaged areas were repaired with Belzona 1121 (Super XL-Metal) for a strong, long-lasting restoration.
3. Finally, the surface was coated with 2 coats of Belzona 1341 (Supermetalgilde), strictly adhering to the manufacturer's Instructions for Use (IFU) to ensure maximum protection and performance.

For more examples of Belzona Know - How In Action, please visit <https://khia.belzona.com>

ISO 9001:2015  
FS 695214  
ISO 14001:2015  
EMS 695213

Belzona products are  
manufactured under an ISO  
9000 Registered Quality  
Management System.

[www.belzona.com](http://www.belzona.com)

**BELZONA**  
Repair • Protect • Improve

## Belzona Facts

- Belzona 9111 is a high-performance cleaner and degreaser formulated to effectively remove oils, grease, dirt, and other contaminants from surfaces, ensuring optimal adhesion before applying Belzona repair and protection systems.

- Belzona 1121 (Super XL-Metal) is a two-component epoxy repair composite designed for rebuilding and resurfacing metal components. With exceptional adhesion, mechanical strength, and corrosion resistance, it is ideal for restoring worn or damaged metal surfaces such as pump casings and shafts, helping to minimize downtime and extend equipment lifespan.

- Belzona 1341 (Supermetalglide) is a high-performance epoxy coating engineered to repair and protect pump casings and other equipment. It provides outstanding adhesion, chemical resistance, and durability, significantly extending the life of pump components. By reducing surface erosion and corrosion, it enhances efficiency, lowers friction, prevents leaks, and improves the overall reliability and performance of pumping systems.

Applying a protective coating will enhance durability, improve efficiency, and reduce energy consumption by minimizing surface deterioration. A reliable coating system helps lower maintenance frequency, prevent unplanned downtime, and extend the pump's operational life. This proactive solution ensures asset reliability, sustainability, and optimal performance in demanding industrial environments.

---

For more examples of Belzona Know - How In Action, please visit <https://khia.belzona.com>

ISO 9001:2015  
FS 695214  
ISO 14001:2015  
EMS 695213

Belzona products are  
manufactured under an ISO  
9000 Registered Quality  
Management System.

[www.belzona.com](http://www.belzona.com)

