

BELZONA LOAD BEARING SHIM SEALS DOCK GATES

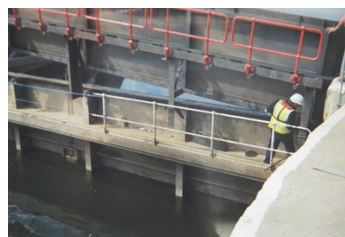
ID: 978

Industry: Marine
 Application: GSS-Gaskets, Seals and Shims
 Substrate: Steel
 Products: * Belzona® 1121 (Super XL Metal) ,

Customer Location: Harbour Authority, UK
 Application Date: 2001

Problem

High tides are getting higher and the existing gates were not tall enough to cope with the new levels of water. an extension was fabricated to raise their height.



Photograph Descriptions

- * Original height of the Dock Gates ,
- * Swinging new section into place ,
- * Final positioning ,
- * Home and dry ,

Application Situation

Dock Gates, part of the new sea defences

Application Method

Application was carried out in accordance with Belzona Know-How System Leaflet GSS-9.

Belzona Facts

The top extension needed to fit snugly to prevent leaking. Belzona provided a load bearing shim between existing and new section. It is still preventing leaking in January 2008.

For more examples of Belzona Know - How In Action, please visit <https://khia.belzona.com>

ISO 9001:2015
 FS 695214
 ISO 14001:2015
 EMS 695213

Belzona products are
 manufactured under an ISO
 9000 Registered Quality
 Management System.

www.belzona.com

BELZONA®
 Repair • Protect • Improve