

# Tipping Hall Bays in an Energy From Waste Plant Survive Constant Abrasion with Belzona Solution

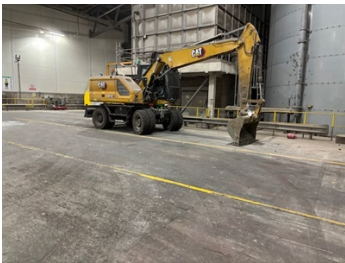
ID: 9780

Industry: Power  
Application: FPA-Floor Problem Areas  
Substrate: Concrete  
Products: Belzona 5231 (SG Laminate), Belzona 9221 (Surefoot Aggregate White)

Customer Location: Ardley, Oxfordshire  
Application Date: January 2025

## Problem

This leading energy from waste site diverts at least 95% of Oxfordshire's residual municipal waste away from landfill and generates enough electricity to power the equivalent of 80,716 homes. Non-Recyclable waste is offloaded into a huge Tipping Hall where Heavy Plant shovels the waste into a huge Pit. To keep this Hazardous area safe the company paint Parking bay lines for the lorries onto the floor which wear off after a few days due to severe abrasion. They also tried an overhead projector to Shine bay lines onto the floor but this also failed in daylight hours or very dusty periods. Belzona worked with the client to devise a long lasting and novel solution.



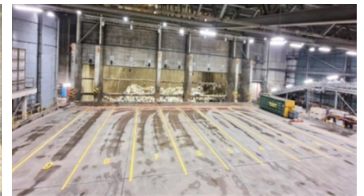
Heavy Plant Used to Shovel Non-Recyclable Waste



Bay Lanes Being Recessed Into Concrete



Parking Bay Numbers also Recessed Into Concrete



Completed Lorry Parking Bays and Numbers after application of Belzona 5231 Yellow

## Application Situation

The customer was constantly re-painting Lorry Parking bays for safety reasons in their Tipping Hall at a continuous Cost every couple of weeks. They also tried a projector system which only worked part of the time in near darkness and when dust was at a minimum.

## Application Method

Application was carried out using a modified version of Belzona Know-How System Leaflet FPA-4. Channels were cut out 100mm wide by 20 metres long down to a 6mm Depth for the Parking Bay Lines. Numbers 1 - 10 were also recessed between each Bay. A Self-Levelling Screed was made using Belzona 5231 Yellow and 9221 Surefoot aggregate mixed 3:1 and poured into the channels and numbers until they were flush with the concrete.

## Belzona Facts

For more examples of Belzona Know - How In Action, please visit <https://khia.belzona.com>

ISO 9001:2015  
FS 695214  
ISO 14001:2015  
EMS 695213

Belzona products are  
manufactured under an ISO  
9000 Registered Quality  
Management System.

[www.belzona.com](http://www.belzona.com)

**BELZONA**  
Repair • Protect • Improve

The customer was fed up with continuously spending money on line paint and labour every couple of weeks. After two months the Belzona Solution still looks new and will last until the complete concrete floor surface has been scraped away. The client was so pleased they sent an internal memo out recommending this solution to all their other Plants in the UK.

---

For more examples of Belzona Know - How In Action, please visit <https://khia.belzona.com>

ISO 9001:2015  
FS 695214  
ISO 14001:2015  
EMS 695213

Belzona products are  
manufactured under an ISO  
9000 Registered Quality  
Management System.

[www.belzona.com](http://www.belzona.com)

