

Sea water pump house pipe repair

ID: 9812

Industry: Power
Application: VPF-Valves, Pipes and Fittings
Substrate: Stainless-steel
Products: Belzona 1111 (Super Metal)

Customer Location: Barrow
Application Date: April 2025

Problem

Severe erosion - through wall defect



Through wall defect on pipe due to severe corrosion



Surface area was prepared to minimum surface profile using power tools

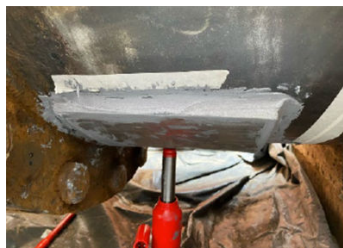


Plate is bonded over the defect area and clamped in place



The entire area is wrapped with Belzona 1111 and Belzona 9341

Application Situation

Due to the confined space, there were few options available. The flange adapter also could not be easily replaced, leading to lengthy delays and increased downtime. The Distributor UK offered the ideal solution to repair the through wall defect and return structural integrity to corroded pipe.

Application Method

The through wall defect area was cleaned and prepared to minimum surface profile using power tools. A pre-made plate was bonded using Belzona 1111, the surrounding surface of the pipe was then wrapped with Belzona 1111 incorporating Belzona 9341 to completely cover areas of pipe susceptible to corrosion.

Belzona Facts

Belzona saved on cost of lengthy shutdowns, waiting for replacement components and also reduced on longer downtimes with an in-situ application

For more examples of Belzona Know - How In Action, please visit <https://khia.belzona.com>

ISO 9001:2015
FS 695214
ISO 14001:2015
EMS 695213

Belzona products are
manufactured under an ISO
9000 Registered Quality
Management System.

www.belzona.com


BELZONA®
Repair • Protect • Improve