

# Heavy Forklift Traffic concrete floor area repaired and protected

ID: 9866

Industry: Buildings & Structures

Customer Location: Burton upon Trent

Application: FPA-Floor Problem Areas

Application Date:

Substrate: Concrete

Products: Belzona 4131 (Magma-Screed), Belzona 4911 (Magma TX Conditioner)

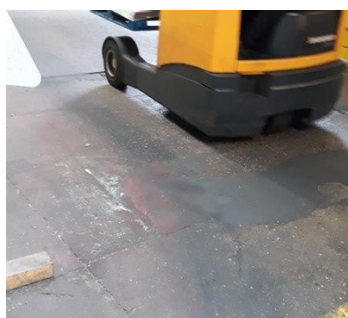
## Problem

The main entrance to a large warehouse was continually pounded by constant forklift traffic entering the building. The traffic wore away the surface, eventually leading to the surface starting to break up.

The area had been "repaired" using other methods a number of times, none of which created a durable solution



Main entrance for all forklift traffic into 4.6 hectare warehouse



Constant heavy traffic using the entrance



Damage caused by constant heavy solid wheel handling machinery



Area completely screeded at an average of 6mm using Belzona 4911 TX Conditioner and Belzona 4131 MagmaScreed

## Application Situation

Consideration had been given to excavating the area and re-concreting the damaged part of the slab. After a meeting with the Belzona Area Sales Engineer the Facilities Manager gave great consideration to using Belzona's 4131 MagmaScrees to offer a quicker and stronger solution to the problem

## Application Method

All loose and friable materials were scraped out and the surface was vacuumed

A thin application of mixed Belzona 4911 TX conditioner was applied by short bristled brush

The Belzona 4131 MagmaQuartz was mixed in a Daines, or Forced Action mixer and applied by gloved hand

Screeding bars and finishing trowels were used to create a perfect new surface, some 3 times the compressive strength of most floor grade concretes. Also this is now impervious to water and chemicals

## Belzona Facts

With the intensive demand and use on this one particular entrance, it would have caused major disruption to operations if excavation and new concrete had been chosen. The Belzona system saved them around 4 days in site works and up to 28 days in curing, putting the whole area back into use in less than a day and a half from start to finish

For more examples of Belzona Know - How In Action, please visit <https://khia.belzona.com>

ISO 9001:2015

FS 695214

ISO 14001:2015

EMS 695213

Belzona products are  
manufactured under an ISO  
9000 Registered Quality  
Management System.

[www.belzona.com](http://www.belzona.com)

  
**BELZONA**  
Repair • Protect • Improve