

Extending Pump Life with Belzona 1321 Ceramic Lining

ID: 9872

Industry: Water / Wastewater
Application: CEP-Centrifugal Pumps
Substrate: Cast Iron
Products: Belzona 1321 (Ceramic S-Metal)

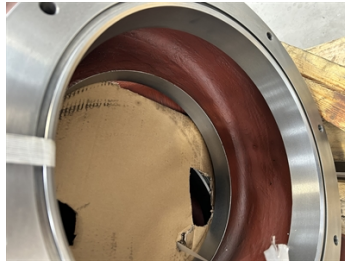
Customer Location: Cirencester
Application Date: July 2025

Problem

Customer had commissioned three Single Stage End Suction pumps with removable suction covers. They wished to add protection from sewage water and increase life expectancy of the new pumps.



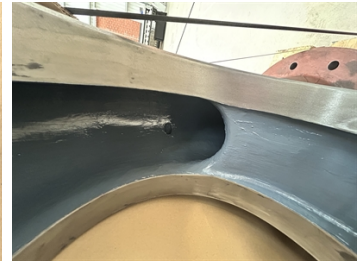
End suction pumps delivered to our state-of-the-art facility



The pumps are grit blasted to a minimum surface profile



Two coats of Belzona 1321 are applied to end suction pumps



Solution is completed and pumps were sent to customer, ready to be installed with added protection.

Application Situation

The customers wished to increase protection and extend life expectancy of assets

Application Method

Surface preparation was carried out by grit blasting all areas in our state-of-the-art blast booth.

The steel substrate was prepared to achieve a minimum surface profile of 75 µm and a surface cleanliness standard of SA 2½.

Following this, our technicians applied a two-coat protective system of Belzona 1321, with each coat applied to a target thickness of 375 µm. Once all works were completed, the coated components underwent a final inspection

Belzona Facts

Belzona 1321 (Ceramic S-Metal) solution increases assets life expectancy by protecting against erosion-corrosion.

For more examples of Belzona Know - How In Action, please visit <https://khia.belzona.com>

ISO 9001:2015
FS 695214
ISO 14001:2015
EMS 695213

Belzona products are
manufactured under an ISO
9000 Registered Quality
Management System.

www.belzona.com

Copyright © Belzona International Limited 2025


BELZONA
Repair • Protect • Improve