

Belzona repairs Bronze Impeller

ID: 9975

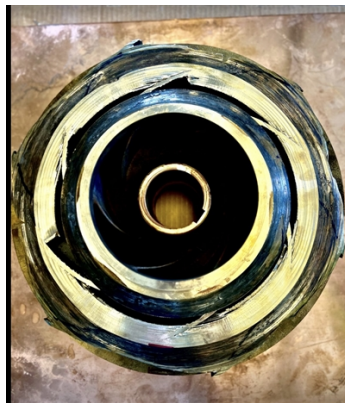
Industry: *Pulp & Paper*Application: *SHM-Solids Handling Machinery*Customer Location: *Decatur, AL*Application Date: *April 2024*Substrate: *Bronze*Products: *Belzona 1111 (Super Metal), Belzona 1321 (Ceramic S-Metal)*

Problem

The customer was facing shutdown in their facility due to not having a backup impeller and long lead time for a new impeller.



Before Belzona repair and protective coating



Cutting it down to make it better



Top view of the repair using Belzona 1111 and brass plate



Completed repair of brass impeller using Belzona 1111 and Belzona 1321

Application Situation

Belzona offered a quick solution with minimal down time. Saving the customer from shut down and saving over seven thousand dollars.

Application Method

We used a local machine shop to cut down the impeller about 1/8 inch. We then cold bond plated a new 1/8 inch bronze plate on to the impeller using Belzona 1111. Once we smoothed out the surface area and tying in the plate to the base metal we then applied Belzona 1321.

Belzona Facts

We saved the customer several thousand dollars and a six month lead time. We turned this impeller around in three days.

For more examples of Belzona Know - How In Action, please visit <https://khia.belzona.com>

ISO 9001:2015

FS 695214

ISO 14001:2015

EMS 695213

Belzona products are
manufactured under an ISO
9000 Registered Quality
Management System.

www.belzona.com

BELZONA
Repair • Protect • Improve