

# Belzona Tackles positional repairs to machine damaged wall

ID: 10045

Industry: Power

Application: WPA-Wall Problem Areas

Substrate: Concrete

Products: Belzona 4141 (Magma-Build), Belzona 4911 (Magma TX Conditioner)

Customer Location: Swadlincote

Application Date: August 2025

## Problem

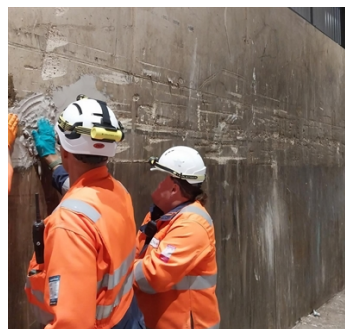
A large wall had continued to sustain damage through impact with loader shovels and payloaders in the tipping hall of a large Energy from Waste site. It was decided to use Belzona MagmaBuild 4141 as a solution and offer sizeable repairs



Closer view of the damage sustained by the payload bucket impact



Colleagues setting about the repair to the wall



Training taking place for the in-house colleagues to learn the application process



Finishing touches to complete the application training

## Application Situation

The Sales Engineer offered to support the application with the in-house colleagues, effectively training them "on the job" to be able to continue further repairs avoiding costly contractor costs.

## Application Method

The wall was prepared by brushing, ensuring that all loose and friable materials were removed

The target areas were coated with Belzona 4911 TX Conditioner

The Belzona 4141 was mixed as per the IFU and applied by gloved hand, building up the volume until being troweled by a finishing trowel

## Belzona Facts

The cost savings by doing this simple application themselves, saved up to £1000 per day. The staff who took part were over the moon with the ease of application and the quality of repair finish

For more examples of Belzona Know - How In Action, please visit <https://khia.belzona.com>

ISO 9001:2015

FS 695214

ISO 14001:2015

EMS 695213

Belzona products are manufactured under an ISO 9000 Registered Quality Management System.

[www.belzona.com](http://www.belzona.com)

  
**BELZONA**  
Repair • Protect • Improve