

# BELZONA REPAIR TO PIVOT PINS OF MILL

ID: 1057

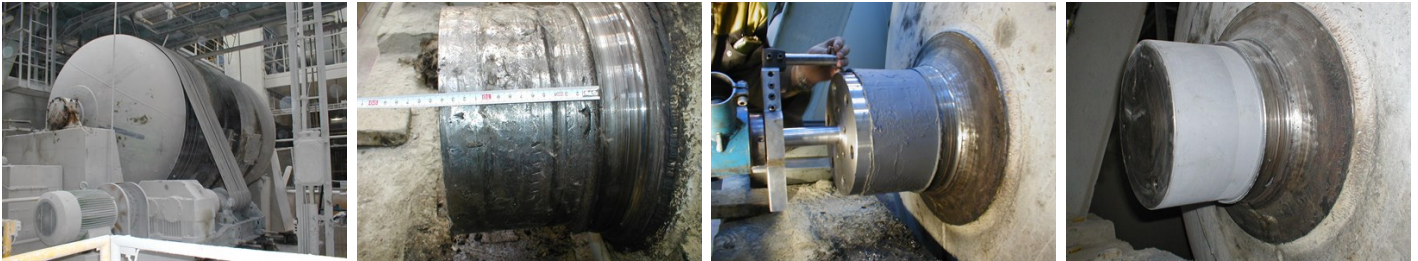
Industry: General Industry  
Application: MPT-Mechanical Power Transmission

Customer Location: Ceramic tile manufacturer, Slovakia  
Application Date: 2004, 2005 & 2006

Substrate: Steel  
Products: Belzona® 1111 (Super Metal)

## Problem

The two pivot pins supporting the crusher are damaged due to loading and working environment.



## Photograph Descriptions

\* An overall view on the mill , \* An example of the excessive damage of the pins , \* Belzona® 1111 ready to be machined , \* The pivot pin prepared for operation ,

## Application Situation

The 70 ton mill is crushing raw materials for the production of tiling and facings.

## Application Method

Application was carried out in accordance with Belzona Know-How System Leaflet MPT-1. Hand portable lathe was used to machine the pivot pins.

## Belzona Facts

The traditional repair using welding and subsequent grinding of the pivot pins took 5 weeks. The repair using Belzona took 3 days, resulting into significant savings.

For more examples of Belzona Know - How In Action, please visit <https://khia.belzona.com>

ISO 9001:2015  
FS 695214  
ISO 14001:2015  
EMS 695213

Belzona products are  
manufactured under an ISO  
9000 Registered Quality  
Management System.

[www.belzona.com](http://www.belzona.com)

  
**BELZONA®**  
Repair • Protect • Improve