

# BELZONA REPEAT APPLICATION ON PUMP DIFFUSER

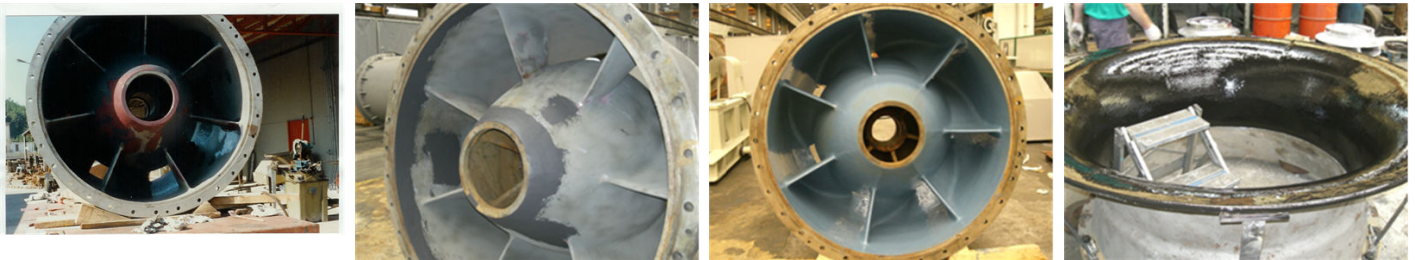
ID: 1087

**Industry:** Water / Wastewater  
**Application:** CEP-Centrifugal Pumps  
**Substrate:** Stainless Steel and Cast Iron  
**Products:** \* Belzona® 1311 (Ceramic R Metal) ,  
\* Belzona® 1341 (Supermetalgilde) ,  
\* Belzona® 5811 (Immersion Grade) ,  
\* Belzona® 1121 (XL Metal) ,

**Customer Location:** Pump manufacturer, Italy  
**Application Date:** May 2007

## Problem

Corrosion protection and efficiency enhancement of equipment



## Photograph Descriptions

- \* Belzona EC barrier after being in service for 22 years ,
- \* Belzona® 1311 used to resurface small areas ,
- \* Completed application of Belzona® 1341 ,
- \* Application of Belzona® 5811 on Cover ,

## Application Situation

Pump diffuser and cover

## Application Method

Application carried out in accordance with Belzona Know-How System Leaflets CEP-3 & -5.

## Belzona Facts

Pump originally protected in 1985 with Belzona Erosion Corrosion Barrier (EC Barrier). The Belzona EC Barrier was still in good shape after the first application which was carried out in 1985 but in need of upgrade to enhance efficiency.

For more examples of Belzona Know - How In Action, please visit <https://khia.belzona.com>

ISO 9001:2015  
FS 695214  
ISO 14001:2015  
EMS 695213

Belzona products are  
manufactured under an ISO  
9000 Registered Quality  
Management System.

[www.belzona.com](http://www.belzona.com)

  
**BELZONA®**  
Repair • Protect • Improve